

TECHNICAL MANUAL

AVIATION INTERMEDIATE MAINTENANCE

REPAIR PARTS AND SPECIAL TOOLS LIST
(INCLUDING DEPOT MAINTENANCE REPAIR
PARTS AND SPECIAL TOOLS)

INTEGRATED LOWER CONTROLS ACTUATOR (ILCA)
BENCH TEST SET

NSN 4920-01-121-0604

"Approved for public release; distribution is unlimited."

This manual supersedes TM 55-4920-428-30P, 23 December 1983.

HEADQUARTERS, DEPARTMENT OF THE ARMY
7 AUGUST 1987

CHANGE

NO. 1

AVIATION INTERMEDIATE MAINTENANCE
REPAIR PARTS AND SPECIAL TOOLS LIST
(INCLUDING DEPOT MAINTENANCE REPAIR PARTS AND SPECIAL TOOLS LIST)
FOR

INTEGRATED LOWER CONTROLS ACTUATOR (ILCA)
BENCH TEST SET
NSN 4920-01-121-0602

DISTRIBUTION STATEMENT A: Approved for public release; distribution is unlimited.

TM 55-4920-428-30P, 7 August 1987, is changed as follows:

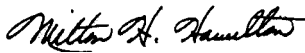
1. Remove and insert pages as indicated below. New or changed text material is indicated by a vertical bar in the margin. An illustration change is indicated by a miniature pointing hand.

Remove pages	Insert pages
i/(ii blank)	i/(ii blank)
1-1 and Figure 2	1-1 and Figure 2
2-1 and Figure 3 (Sheet 1 of 3)	2-1 and Figure 3 (Sheet 1 of 3)
3-1 and 3-2	3-1 and 3-2
4-1 and 4-2	4-1 and 4-2
4-3 and Figure 5 (Sheet 1 of 5)	4-3 and Figure 5 (Sheet 1 of 5)
5-3 and Figure 6	5-3 and Figure 6
6-1 and Figure 7	6-1 and Figure 7
1-3 and 1-4	1-3 and 1-4
I-5 and I-6	I-5 and I-6
I-7 and I-8	I-7 and I-8
I-9 and I-10	I-9 and I-10
- - -	I-10.1/(I-10.2 blank)
I-11 and I-12	I-11 and I-12
I-13	I-13

2. Retain this sheet in front of manual for reference purposes.

By Order of the Secretary of the Army:

Official:



MILTON H. HAMILTON
*Administrative Assistant to the
Secretary of the Army*

04008

GORDON R. SULLIVAN
*General, United States Army
Chief of Staff*

DISTRIBUTION:

To be distributed in accordance with DA Form 12-31-E, block no. 1220, requirements for TM 55-4920-428-30P.

AVIATION INTERMEDIATE
MAINTENANCE REPAIR PARTS AND SPECIAL TOOLS LIST
(INCLUDING DEPOT MAINTENANCE REPAIR PARTS AND SPECIAL TOOLS LIST)

FOR

INTEGRATED LOWER CONTROLS ACTUATOR (ILCA)
BENCH TEST SET
NSN 4920-01-121-0602

REPORTING ERRORS AND RECOMMENDING IMPROVEMENTS

You can help improve this manual. If you find any mistakes or if you know of away to improve these procedures, please let us know. Mail your letter or DA Form 2028 (Recommended Changes to Publications and Blank Forms), or DA Form 2028-2 located in the back of this manual directly to: Commander, US Army Aviation and Troop Command, ATTN: AMSAT-I-MP, 4300 Goodfellow Blvd., St. Louis, MO 63120-1798. A reply will be furnished directly to you.

TABLE OF CONTENTS

Section		Listing Page	Ilus Figure
I.	INTRODUCTION	1	
II.	REPAIR PARTS LIST	1-1	
	GROUP 01 TEST SET, ILCA BENCH	1-1	
	Exploded View of ILCA Bench Test Set	1-1	1
	Cable Assy (AFCS 1, AFCS 2, Solenoid, AC Power	2-1	2
	Chassis Ashy	3-1	3
	GROUP 02 HYDRAULIC UNIT	4-1	
	Hydraulic Unit, INCA	4-1	4
	Chassis Assy	5-1	5
	Manifold Assy	6-1	6
	Cycling Motor Assy.....	7-1	7
	Lower Panel Assy	8-1	8
	Manifold Assy	9-1	9
	Case Assy	10-1	10
	Filter	11-1	11
	Group 03 BULK MATERIAL	Bulk-1	
III.	SPECIAL TOOLS LIST		
	Not Applicable	N/A	N/A
IV.	NATIONAL STOCK NUMBER AND PART NUMBER INDEX		
	National Stock Number and Part Number Index	I-1	

DISTRIBUTION STATEMENT A: Approved for public release; distribution is unlimited.

SECTION I. INTRODUCTION

1. Scope.

This RPSTL lists and authorizes spares and repair parts; special tools; special test, measurement, and diagnostic equipment (TMDE); and other special support equipment required for performance of Aviation Intermediate Maintenance (AVIM) for the Integrated Lower Controls Actuator (ILCA) Bench Test Set. It authorizes the requisitioning, issue, and disposition of spares, repair parts and special tools as indicated by the source, maintenance and recoverability (SMR) codes.

2. General.

In addition to Section I, Introduction, this Repair Parts and Special Tools List is divided into the following sections:

a. Section II. Repair Parts List. A list of spares and repair parts authorized by this RPSTL for use in the performance of maintenance. The list also includes parts which must be removed for replacement of the authorized parts. Parts lists are composed of functional groups in ascending alphanumeric sequence, with the parts in each group listed in ascending figure and item number sequence. Bulk materials are listed in item name sequence. Repair parts kits are listed separately in their own functional group within Section II. Repair parts for repairable special tools are also listed in this section. Items listed are shown on the associated illustration(s)/figure(s).

b. Section III. Special Tools List. A list of special tools, special TM DE, and other special support equipment authorized by this RPSTL (as indicated by Basis of Issue (BOI) information in DESCRIPTION AND USABLE ON CODE column) for the performance of maintenance. (Not Applicable)

c. Section IV. National Stock Number and Part Number Index. A list, in National Item Identification Number (NIN) sequence, of all National stock numbered items appearing in the listing, followed by a list in alphanumeric sequence of all part numbers appearing in the listings. National stock numbers and part numbers are cross-referenced to each illustration figure and item number appearance.

CODE

CODE	Explanation
MO- (Made at org/AVUM Level) MF- (Made at DS/AVUM Level) MH- (Made at GS Level) ML- (Made at Specialized Repair Act (SRA)) MD- (Made at Depot)	Items with these codes are not to be requested/ requisitioned individually. They must be made from bulk material which is identified by the part number in the DESCRIPTION AND USABLE ON CODE (UOC) column and listed in the Bulk Material group of the repair parts list in this RPSTL. If the item is authorized to you by the 3d position code of the SMR code, but the source code indicates it is made at a higher level, order the item from the higher level of maintenance.
AO- (Assembled by org/AVUM Level) AF- (Assembled by DS/AVIM Level) AH- (Assembled by GS Category) AL- (Assembled by SRA) AD- (Assembled by Depot)	Items with these codes are not to be requested/requisitioned individually. The parts that make up these assembled item must be requisitioned or fabricated and assembled at the level of maintenance indicated by the source code. If the 3d position code of the SMR code authorizes you to replace the item, but the source code indicates the item is assembled at a higher level, order the item from the higher level of maintenance.

XA- Do not requisition an "XA"-coded item. Order its next higher assembly. (Also, refer to the NOTE below.)

XB- If an "XB" item is not available from salvage, order it using the FSCM and part number given.

XC- Installation drawing, diagram, instruction sheet, field service drawing, that is identified by manufacturer's part number.

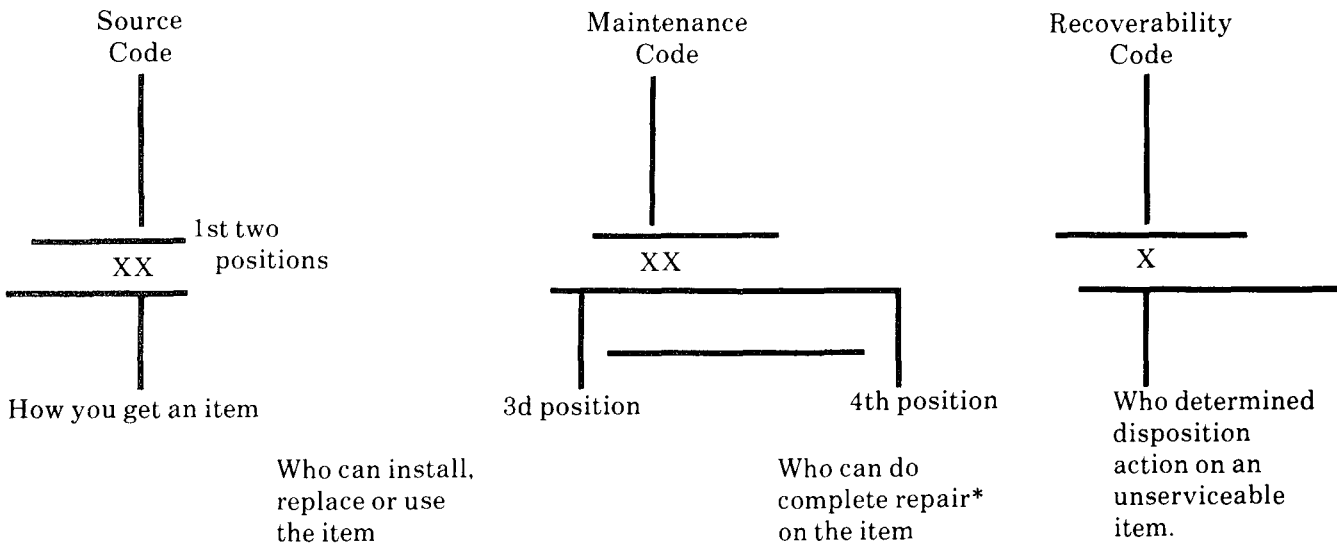
XD- Item is not stocked. Order an "XD"-coded item through normal supply channels using the FSCM and part number given, if no NSN is available.

NOTE: Cannibalization or controlled exchange, when authorized, may be used as a source of supply for items with the above source codes, except for those source coded "XA" or those aircraft support items restricted by requirements of AR 700-42.

3. Explanation of Columns (Sections II and III).

a. ITEM NO. (Column 1). Indicates the number used to identify items called out in the illustration.

b. SMR CODE (Column 2). The Source, Maintenance, and Recoverability (SMR) code is a 5-position code containing supply/requisitioning information, maintenance category authorization criteria, and disposition instruction, as shown in the following breakout:



*Complete Repair Maintenance capacity, capability, and authority to perform all corrective maintenance tasks of the "Repair: function in a use/user environment in order to restore serviceability to a failed item.

(1) **Source Code.** The source code tells you how to get an item needed for maintenance, repair, or overhaul of an end item/equipment. Explanations of source codes follows:

Code	Explanation
PA PB PC** PD PE PF PG	<p>Stocked items; use the applicable NSN to request/requisition items these source codes. They are authorized to the category indicated by the code entered in the 3d position of the SMR code.</p> <p>**NOTE: Items coded PC are subject to deterioration.</p>
KD KF KB	<p>Items with these codes are not to be requested/requisitioned individually. They are part of a kit which is authorized to the maintenance category indicated in the 3d position of the SMR code. The complete kit must be requisitioned and applied.</p>

(2) **Maintenance Code.** Maintenance codes tells you the level(s) of maintenance authorized to USE and REPAIR support items. The maintenance codes are entered in the third and fourth positions of the SMR Code as follows:

(a) The maintenance code entered in the third position tells you the lowest maintenance level authorized to remove, replace, and use an item. The maintenance code entered in the third position will indicate authorization to one of the following levels of maintenance.

Code	Application/Explanation
C	-Crew or operator maintenance done within organizational or aviation unit maintenance.
O	-Organizational or aviation unit category can remove, replace, and use the item.
F	-Direct support or aviation intermediate level can remove, replace, and use the item.
H	-General support level can remove, replace, and use the item.
L	-Specialized repair activity can remove, replace, and use the item.
D	-Depot level can remove, replace, and use the item.

(b) The maintenance code entered in the fourth position tells whether or not the item is to be repaired and identifies the lowest maintenance level with the capability to do complete repair (i.e., perform all authorized repair functions). (NOTE: Some limited repair may be done on the item at a lower level of maintenance, if authorized by the Maintenance Allocation Chart (MAC) and SMR codes.) This position will contain one of the following maintenance codes.

CODE	Application / Explanation
O	-Organizational or (aviation unit) is the lowest level that can do complete repair of the item.
F	-Direct support or aviation intermediate is the lowest level that can do complete repair of the item.
H	-General support is the lowest level that can do complete repair of the item.
L	-Specialized repair activity (designate the specialized repair activity) is the lowest level that can do complete repair of the item.
D	-Depot is the lowest level that can do complete repair of the item.
Z	-Nonreparable. No repair is authorized.
B	-No repair is authorized. (No parts or special tools are authorized for the maintenance of a "B" coded item). However, the item may be reconditioned by adjusting, lubricating, etc., at the user level.

(3) **Recoverability Code.** Recoverability codes are assigned to items to indicate the disposition action on unserviceable items. The recoverability code is entered in the fifth position of the SMR Code as follows:

Recoverability Codes	Application/ Explanation
Z	-Nonreparable item. When unserviceable, condemn and dispose of the item at the level of maintenance shown in 3d position of SMR Code.
O	-Reparable item. When uneconomically repairable, condemn and dispose of the item at organizational or aviation unit level.
F	-Reparable item. When uneconomically repairable, condemn and dispose of the item at the direct support or aviation intermediate level.
H	-Reparable item. When uneconomically repairable, condemn and dispose of the item at the general support level.
D	-Reparable item. When beyond lower level repair capability, return to depot. Condemnation and disposal of item not authorized below depot level.
L	-Reparable item. Condemnation and disposal not authorized below specialized repair activity (SRA).
A	-Item requires special handling or condemnation procedures because of specific reasons (e.g., precious metal content, high dollar value, critical material, or hazardous material). Refer to appropriate manuals/ directives for specific instructions.

c. FSCM (Column (3)). The Federal Supply Code for Manufacturer (FSCM) is a 5-digit numeric code which is used to identify the manufacturer, distributor, or Government agency, etc., that supplies the item.

d. PART NUMBER (Column (4)). Indicates the primary number used by the manufacturer (individual, company, firm, corporation, or Government activity), which controls the design and characteristics of the item by means of its engineering drawings, specifications standards, and inspection requirements to identify an item or range of items.

NOTE: When you use a NSN to requisition an item, the item you receive may have a different part number from the part ordered.

e. DESCRIPTION AND USABLE ON CODE (UOC) (Column (5)). This column includes the following information:

(1) The Federal item name and, when required, a minimum description to identify the item.

(2) The physical security classification of the item is indicated by the parenthetical entry (insert applicable physical security classification abbreviation, e.g., Phy Sec Cl (c) -Confidential, Phy Sec Cl (S) Secret, Phy Sec Cl (T) -Top Secret).

(3) Items that are included in kits and sets are listed below the name of the kit or set.

(4) Spare; repair parts that make up an assembled item are listed immediately following the assembled item line entry.

(5) Part numbers for bulk materials are referenced in this column in the line item entry for the item to be manufactured/ fabricated.

(6) When the item is not used with all serial numbers of the same model, the effective serial numbers are shown on the last line(s) of the description (before UOC).

(7) The usable on code, when applicable (see paragraph 5, Special information).

(8) In the Special Tools List section, the basis of issue (BOI) appears as the last line(s) in the entry for each special tool, special TM DE, and other special support equipment. When density of issue, the total authorization is increased proportionately.

(9) The statement "END OF FIGURE" appears just below the last item description in Column 5 for a given figure in both Section II and Section III.

f. QTY (Column (6)). The QTY (quantity per figure column) indicates the quantity of the item used in the breakdown shown on the illustration figure, which is prepared for a functional group, subfunctional group, or an assembly. A "V" appearing in this column in lieu of a quantity indicates that the quantity is variable and the quantity may vary from application to application.

4. Explanation of Columns (Sect. IV).

a. NATIONAL STOCK NUMBER (NSN) INDEX.

(1) *STOCK NUMBER Column.* This column lists the NSN by National item identification number
 NSN
 (NIIN) sequence. The NIIN consists of the last nine digits of the NSN (i.e., 5305-01-674-1467). When using
 NIIN
 this column to locate an item, ignore the first 4 digits of the NSN. However, the complete NSN should be used when ordering items by stock number.

(2) **FIG. column.** This column lists the number of the figure where the item is identified / located. The figures are in numerical order in Section II and Section III.

(3) **ITEM column.** The item number identifies the item associated with the figure listed in the adjacent FIG. column. This item is also identified by the NSN listed on the same line.

b. PART NUMBER INDEX. Part numbers in this index are listed by part number in ascending alphanumeric sequence (i.e., vertical arrangement of letter and number combination which places the first letter or digit of each group in order A through Z, followed by the numbers O through 9 and each following letter or digit in like order).

(1) **FSCM column.** The Federal Supply Code for Manufacturer (FSCM) is a 5-digit numeric code used to identify the manufacturer, distributor, or Government agency, etc., that supplies the item.

(2) **PART NUMBER column.** Indicate the primary number used by the manufacturer (individual, firm, corporation, or Government activity), which controls the design and characteristics of the item by means of its engineering drawings, specifications standards, and inspection requirements to identify an item or range of items.

(3) **STOCK NUMBER column.** This column lists the NSN for the associated part number and manufacturer identified in the PART NUMBER and FSCM columns to the left.

(4) **FIG. column.** This column lists the number of the figure where the item is identified / locate in Section II and III.

(5) **ITEM column.** The item number is that number assigned to the item as it appears in the figure referenced in the adjacent figure number column.

5. Special Information. Use the following subparagraphs as applicable:

a. USABLE ON CODE. The usable on code appears in the lower left corner of the Description column heading. Usable on codes are shown as "UOC:" in the Description Column (justified left) on the first line applicable item description / nomenclature. Uncoded items are applicable to all models. Identification of the usable on codes used in the RPSTL are:

Code	Used On	
PAA	Model M114	
PAB	Model M114A	(These codes and model numbers are examples only)
PAC	Model M114B	

b. INDEX NUMBERS. Items which leave the word BULK in the figure column will have an index number shown in the item number column. This index number is a cross-reference between the National Stock Number / Part Number Index and the bulk material list in Section II.

c. ASSOCIATED PUBLICATIONS. The publication(s) listed below pertain to and its components:

Publication

Short Title

TM 55-4920-428-13

Operator and AVIM Maintenance Manual

NOTE: Associated publications shall not be listed her in combined narrative and RPSTL manuals.

6. How to Locate Repair Parts.

a. When National Stock Number or Part Number is Not Known.

(1) *First.* Using the table of contents, determine the assembly group or subassembly group to which the item belongs. This is necessary since figures are prepared for assembly groups and subassembly groups, and listings are divided into the same group.

(2) *Second.* Find the figure covering the assembly group or subassembly group to which the item belongs.

(3) *Third.* Identify the item on the figure and note the item number.

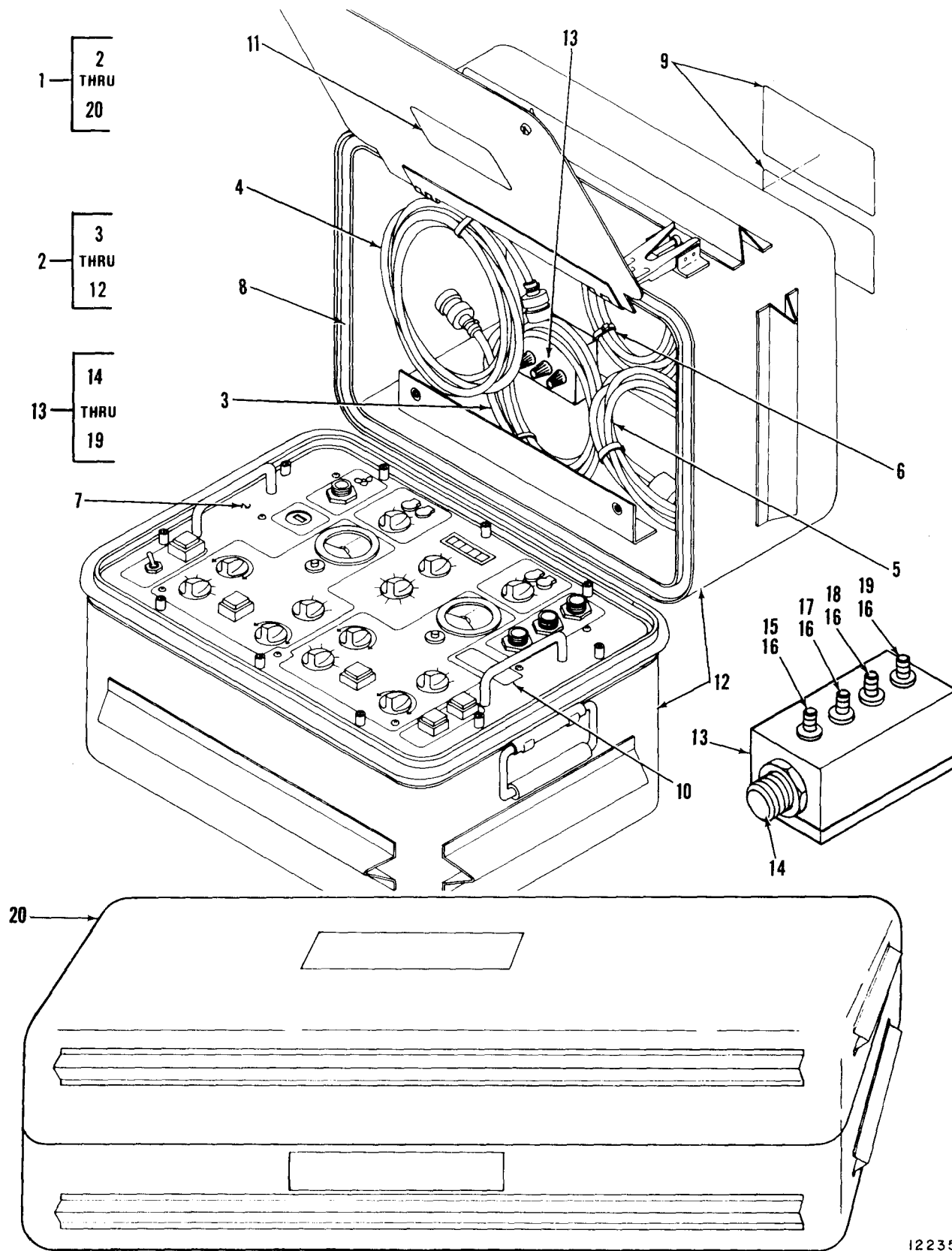
(4) *Fourth.* Refer to the Repair Parts Lists for the figure to find the part number for the item number noted on the figure.

(5) *Fifth.* Refer to the Part Number Index to find the NSN, if assigned.

b. When National Stock Number or Part Number is Known:

(1) *First.* Using the Index of National Stock Numbers and Part Numbers, find the pertinent National Stock Number or Part Number. The NSN index is in National Item Identification Number (NIIN) sequence (see 4a (1)). The part numbers in the Part Number index are listed in ascending alphanumeric sequence (see 4b). Both indexes cross-reference you to the illustration figure and item number of the item you are looking for.

(2) *Second.* After finding the figure and item number, verify that the item is the one you're looking for, then locate the item number in the repair parts list for the figure.



12235

Figure 1. Exploded View of ILCA Bench Test Set

SECTION II (1) ITEM NO	(2) SMR CODE	(3) FSCM	TM55-4920-428-30P (4) PART NUMBER	C01 (5) DESCRIPTION AND USABLE ON CODE (UOC)	(6) QTY
GROUP 01, BENCH TEST, ELECTRICAL UNIT					
FIGURE 1. TEST SET, ILCA BENCH					
1	PBFDD	77272	145GS278-1	TEST SET, ILCA BENCH (182-14900-2)	1
2	PBFDD	81205		.ELECTRICAL UNIT 1(182-14899-4)	1
3	XDFFF	77272	145GS278-5	..CABLE ASSY (182-14896-1)	1
4	XDFFF	77272	145GS278-6	..CABLE ASSY (182-14896-2)	1
5	XDFFF	77272	145GS278-7	..CABLE ASSY (182-14896-3)	1
6	XDFFF	77272	145GS278-4	..CABLE ASSY AC PWR (182-14896-5)	1
7	XDFDD	81205	182-14890	..CHASSIS ASSY ILCA	1
8	XDFZZ	81205	182-14895-2	..GASKET	1
9	XDFZZ	77272	VS25113-4	..NAMEPLATE	2
10	XDFZZ	81205	182-14899-2	..NAMEPLATE	1
11	XDFZZ	81205	182-14899-3	..NAMEPLATE	1
12	XDFZZ	98376	396KA2L32P33C1A	..CASE	1
13	XDFZZ	81205		..ADAPTER,LVDT TEST (182-14897-2)	1
14	PAFZZ	81349	M83723185R1415N	..CONNECTOR ASSEMBLY	1
15	RAFZZ	58474	BP30	...POST,BINDING,ELECTR	1
16	PAFZZ	88044	AN960-816L	...WASHER,FLAT	4
17	PAFZZ	58474	BP30GN	...POST,BINDING,ELECTR	1
18	PAFZZ	58474		...POST,BINDING,ELECTR	1
19	PAFZZ	58474	BP30WT	...POST,BINDING,ELECTR	1
20	PBFDD	77272	145GS278-2	.HYDRAULIC UNIT (182-14937-12)	1
END OF FIGURE					

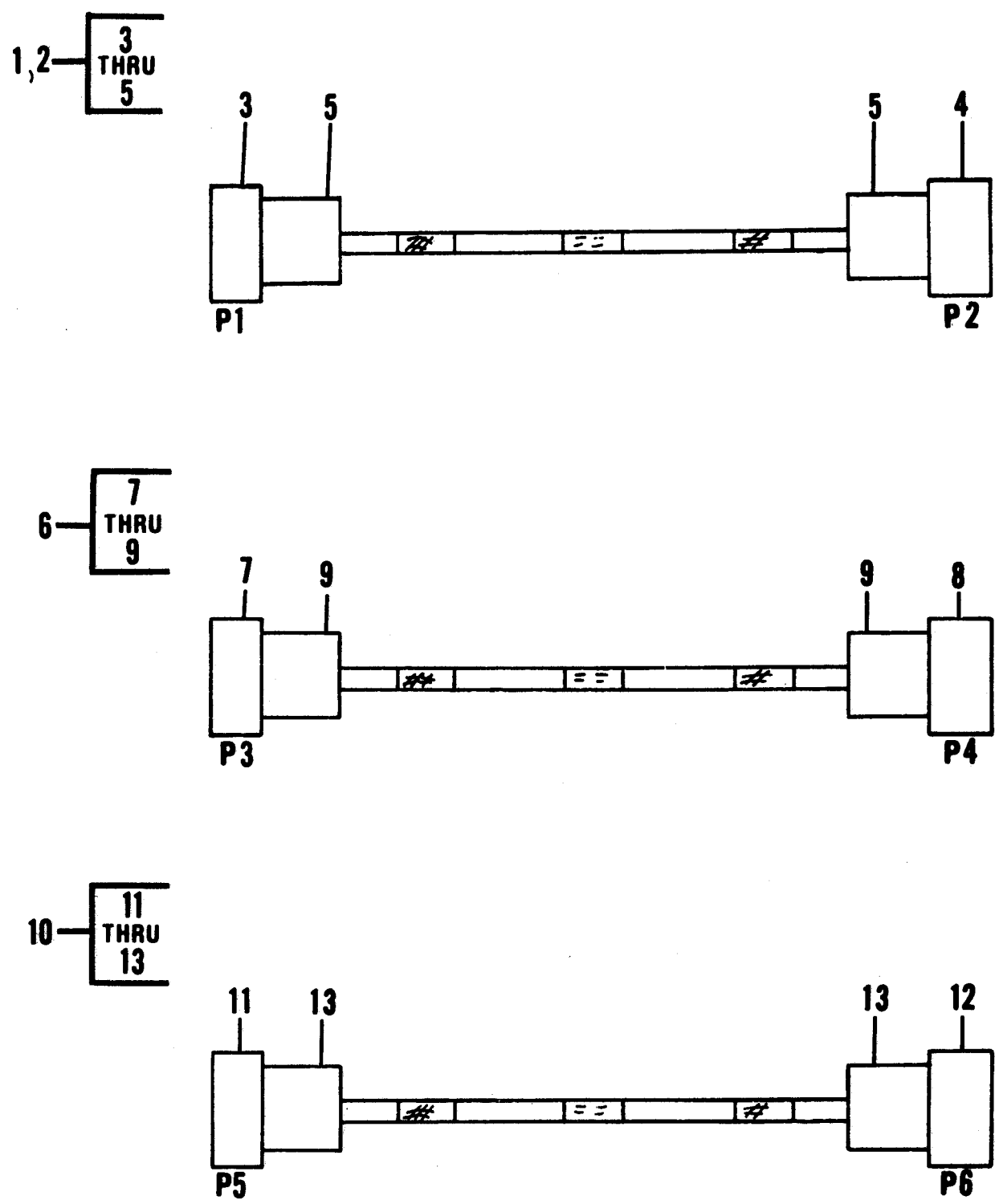


Figure 2. Cable Assy SOLENOID, AC POWER)

SECTION II (1) ITEM NO	(2) SMR CODE	(3) FSCM	TM55-4920-428-30P (4) PART NUMBER	C01 (5) DESCRIPTION AND USABLE ON CODE (UOC)	(6) QTY
				GROUP 01, BENCH TEST, ELECTRICAL UNIT	
				FIGURE 2. CABLE ASSEMBLY	
1	XDFFF	77272	145GS278-5	CABLE ASSY (182-14896-1) SEE FIG 1 FOR NHA	1
2	XDFFF	77272	145GS278-6	CABLE ASSY (182-14896-2) SEE FIG 1 FOR NHA	1
3	PAFZZ	81349	M83723/87R1415N	.CONNECTOR, PLUG, ELEC	1
4	PAFZZ	81349	M83723/86R1415N	.CONNECTOR, PLUG, ELEC	1
5	PBFZZ	96906	MS3417-14N	.CLAMP, CABLE, ELECTRI	2
6	XDFFF	77272	145GS278-7	CABLE ASSY SHUTOFF(182-14896-3)SEE FIG 1 FOR NHA	1
7	PAFZZ	81349	M83723/87R1412N	.CONNECTOR	1
8	PAFZZ	81349	M83723/86R1412N	.CONNECTOR, PLUG, ELEC	1
9	PBFZZ	96906	MS3417-14N	.CLAMP, CABLE, ELECTRI	2
10	XDFFF	77272	145GS278-4	CABLE ASSY AC POWER (182-14896-5) SEE FIG 1 FOR NHA	1
11	PAFZZ	81349	M83723/86R1203N	.CONNECTOR, PLUG, ELEC	1
12	PAFZZ	74545	5266C	.CONNECTOR, PLUG, EL	1
13	PBFZZ	96906	MS3417-12N	.CLAMP, CABLE, ELECTRI	2
				END OF FIGURE	

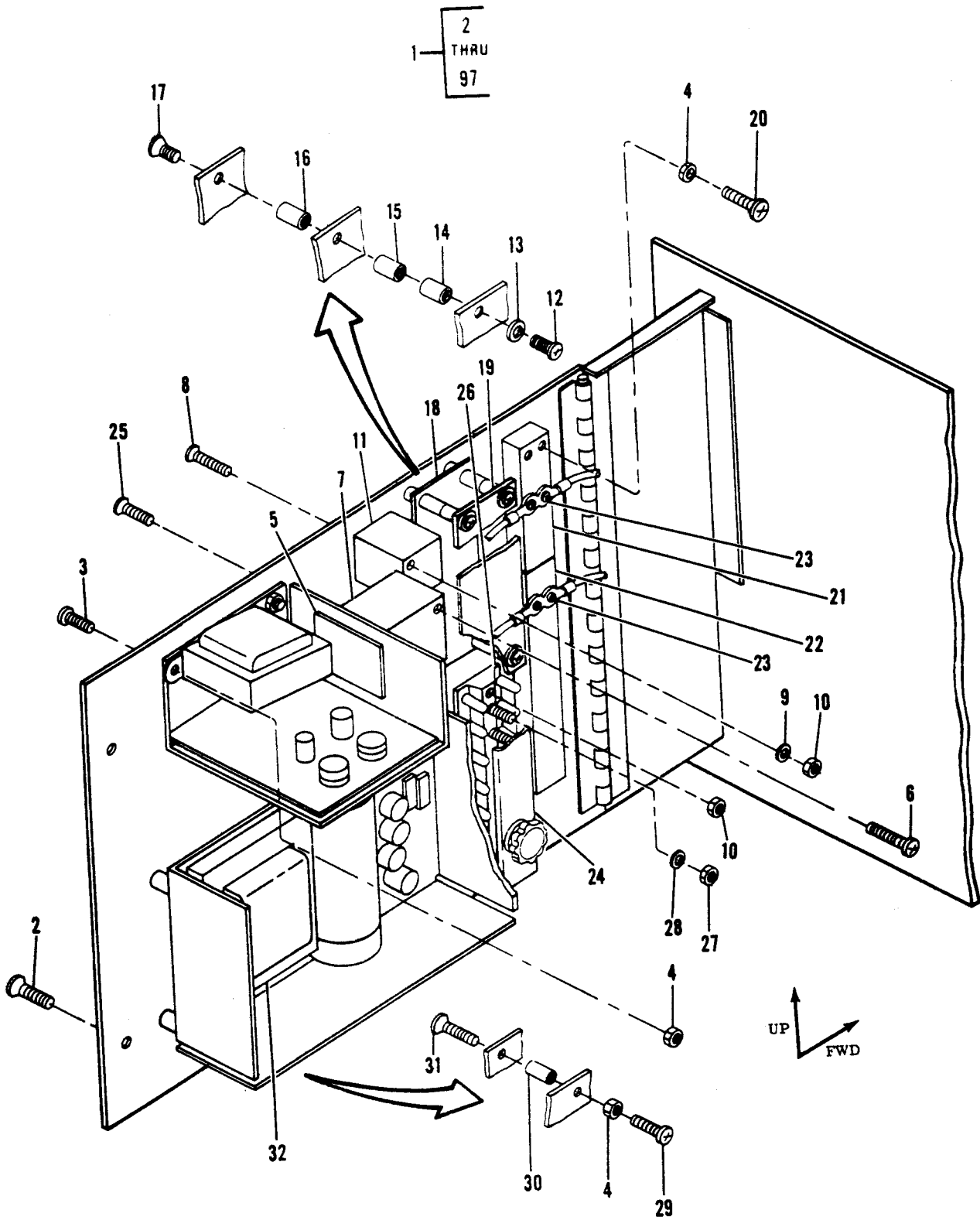


Figure 3. Chassis Assy (Sheet 1 of 3)

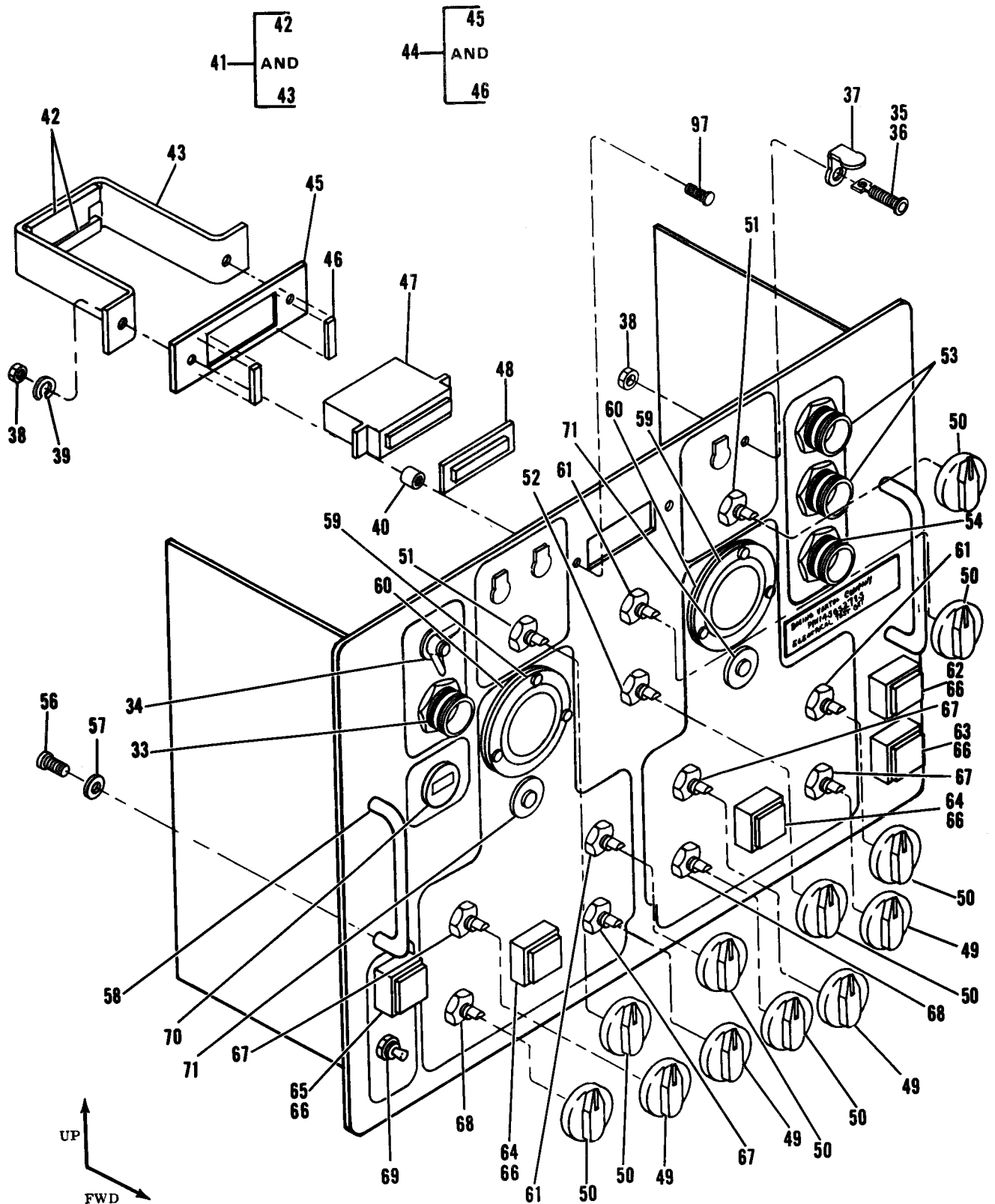


Figure 3. Chassis Assy (Sheet 2 of 3)

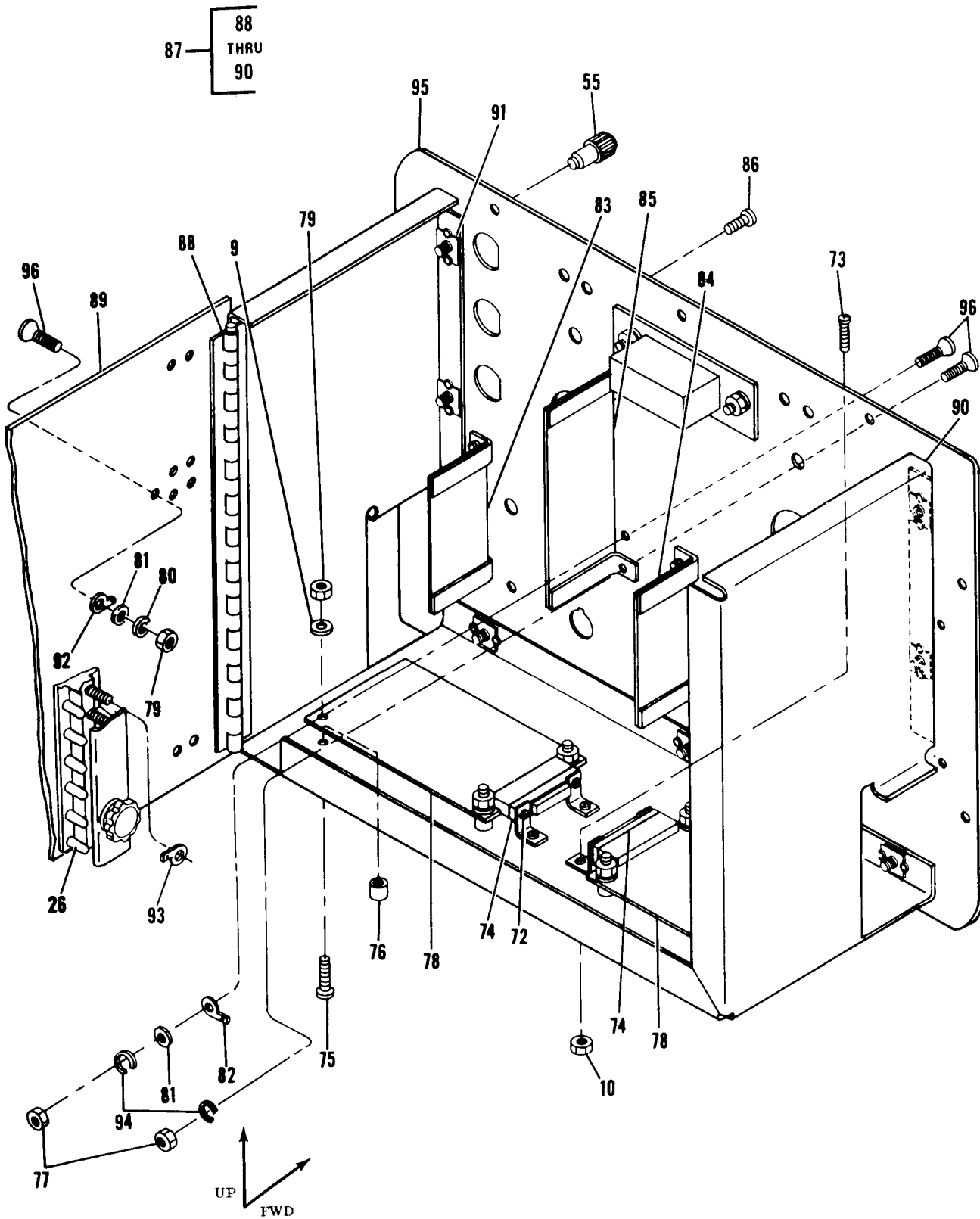


Figure 3. Chassis Assy (Sheet 3 of 3)

SECTION II (1) ITEM NO	(2) SMR CODE	(3) FSCM	TM55-4920-428-30P (4) PART NUMBER	C01 (5) DESCRIPTION AND USABLE ON CODE (UOC)	(6) QTY
				GROUP 01, BENCH TEST, ELECTRICAL UNIT	
				FIGURE 3 CHASSIS ASSY, ELECTRICAL UNIT	
1	XDFDD	81205	182-14890-8	CHASSIS ASSY ILCA ELECTRICAL UNIT SEE FIG 1 FOR NHA	1
2	PAFZZ	80205	NAS5141032-10P	.ZSCREW	3
3	PAFZZ	80205	NAS514P832-6P	.SCREW,MACHINE	2
4	PAFZZ	96906	MS21044N08	.NUT,SELF-LOCKING,HE	15
5	PBDZD	81205	182-14887-1	.VOLTAGE REGULATOR G LTS(PS1)	1
6	PAFZZ	80205	NAS514P832-10P	.SCREW,MACHINE	4
7	PAFZZ	15755	S1D-27A-400	.INVERTER	1
8	PAFZZ	80205	NAS514P440-20P	.SCREW,MACHINE	2
9	PAFZZ	88044	AN960-4L	.WASHER,FLAT	10
10	PAFZZ	96906	MS21044N04	.NUT,SELF-LOCKING,HE	16
11	XDFZZ	15434	S962	.TRANSFORMER	1
12	PAFZZ	80205	NAS601-32P	.SCREW,MACHINE	6
13	PADZZ	80205	NAS620-6	.WASHER,FLAT	6
14	PAFZZ	80205	NAS43DD1-52	.SPACER,SLEEVE	6
15	PAFZZ	80205	NAS43DD1-56	.SPACER,SLEEVE	6
16	PAFZZ	80205	NAS1786A06-6	.POST,ELECTRICAL-MEC	6
17	PAFZZ	80205	NAS514P632-5P	.SCREW,MACHINE	12
18	XDFDD	81205	182-14890-12	.TERMINAL BOARD ASSY (TB6)	1
19	XDFDD	81205	182-19549-1	.UNDERVOLTAGE DETECTOR	1
20	PAFZZ	80205	NAS514P832-12P	.SCREW,MACHINE	8
21	PAFZZ	81349	38TB6	.TERMINAL BOARD	1
22	PAFZZ	71785	12-141	.TERMINAL STRIP	1
23	PBFZZ	71785	140J-1	.JUMPER	10
24	PAFFZ	96906	MS18029-12S16	.COVER,TERMINAL B	1
25	PAFZZ	80205	NAS514P440-8P	.SCREW,MACHINE	2
26	PAFZZ	96906	MS27212-2-16	.TERMINAL BOARD	1
27	PAFZZ	96906	MS21044N3	.NUT,SELF-LOCKING,HE	6
28	PAFZZ	88044	AN960-10L	.WASHER,FLAT	6
29	PAFZZ	80205	NAS601-4P	.SCREW,MACHINE	4
30	PAFZZ	80205	NAS1786A08-8	.NUT,PLAIN,HEXAGON	4
31	PAFZZ	80205	NAS514P832-6P	.SCREW,MACHINE	4
32	XDFDD	51106	SLS92-28	.POWER SUPPLY	1
33	PAFZZ	81349	NAS607-4-4	.CONNECTOR	1
34	PAFZZ	81205	BACS53B1EA2	.TERMINAL,STUD	1
35	PAFZZ	81205	BACJ11AB1-03	.JACK,TIP	2
36	PAFZZ	81205	BACJ11AB1-02	.JACK,TIP	2
37	XDFZZ	99813	J1304-4	.COVER,JACK	4
38	PAFZZ	96906	MS35649-202	.NUT,PLAIN,HEXAGON	2
39	PAFZZ	96906	MS35338-43	.WASHER,LOCK	2
40	PAFZZ	80205	NAS43DD3-16	.SPACER,SLEEVE	2
41	XDFFF	81205	182-14894-15	.RETAINER ASSY	1
42	XDFZZ	81205	182-14894-11	..PAD	1
43	XDFZZ	81205	182-14894-12	.PLATE(U/W 182-14894 -13)	1
44	XDFFF	81205	182-14894-9	.RETAINER ASSY	1

SECTION II (1) ITEM NO	(2) SMR CODE	(3) FSCM	TM55-4920-428-30P (4) PART NUMBER	C01 (5) DESCRIPTION AND USABLE ON CODE (UOC)	(6) QTY
45	XDFZZ	81205	182-14894-3	.RETAINER	1
46	XDFZZ	81205	182-14894-8	.RUBBER PAD	2
47	PBFLL	81205	182-19555-1	.VOLTMETER,DIGITAL (DM1)	1
48	XDFZZ	81205	182-14894-2	.LENS	1
49	XDFZZ	15084	BP249-105R	.KNOB	4
50	XDFZZ	15084	BP249-A2G4	.KNOB	8
51	PBFZZ	76854	5-21611-313	.SWITCH,4 POS.1 POLE (S1,S2)	2
52	PBFZZ	76854	5-22381-327BAM3	.SWITCH,POLE E(S5)	1
53	PAFZZ	81349	M83723/84R1415N	.CONNECTOR	2
54	PAFZZ	81349	M83723/84R1412N	.CONNECTOR,RECEPTACL	1
55	XDFZZ	81205	STBS12EZ10BD6	.SCREW,LOCKING	10
56	PAFZZ	80205	NAS603-6P	.SCREW,MACHINE	4
57	PAFZZ	83259	600-3130-10	.PAKING WITH RETAIN	6
58	XDFZZ	96906	MS39087-201AN	.HANDLE	2
59	PBFZZ	55133	MR26W5T5DCUAR	.AMMETER	2
60	XDFZZ	81205	182-14895-1	.GASKET	2
61	PBFZZ	76854	5-41541-312	.SWITCH,3 POS.1 POLE (S3,S7,S9)	2
62	PBFZA	91929	PMHH152GR4DG-64	.SWITCH,PUSHBUTTON S12)	1
63	PBFZZ	91929	PMHH152GR4DG-63	.SWITCH SHUTOFF (S18)	1
64	PBFZA	91929	PMHH152WB4DG-SEL F/CROSS	.SWITCH,PUSH	2
65	PBFZA	91929	PMHH152GR4DC-99	.SWITCH,PUSHBUTTON (S11)	1
66	PAFZZ	71744	CM7-7632	.LAMP,INCANDESCENT	2
67	PAFZZ	81349	RV6SAYS103A	.RESISTOR,VARIABLE,N	4
68	PBFZZ	76854	5-16311-316BAM1	.SWITCH,POLE (S14,S16)	2
69	PBFZZ	81349	M39019/03-249	.CIRCUIT BREAKER W/SEAL(S17)	1
70	PBFZZ	82227	K19783-HO	.METER,ELAPSED TIME	1
71	PBFZZ	91929	2PB901-T2	.SWITCH,PUSH(S4,S6) (X10SW)	2
72	PAFZZ	80205	NAS600-4P	.SCREW,MACHINE	4
73	PAFZZ	80205	NAS600-5P	.SCREW,MACHINE	4
74	PBFZZ	81205	280-35001-115	.CONNECTOR	2
75	PAFZZ	80205	NAS600-11P	.SCREW,MACHINE	8
76	PAFZZ	80205	NAS43DD0-18	.SPACER,SLEEVE	8
77	PAFZZ	96906	MS21044N06	.NUT,SELF-LOCKING,HE	2
78	XDDDD	81205	182-14892-14	.PWB ACTR CONT ASSY (PCA-1,PCA-2)	2
79	PAFZZ	80205	NAS671-6	.NUT,PLAIN,HEXAGON	6
80	PAFZZ	96906	MS35338-41	.WASHER,LOCK	6
81	PAFZZ	88044	AN960-6	.WASHER,FLAT	2
82	PAFZZ	96906	MS77072-2	.TERMINAL,LUG	1
83	XDFDD	81205	182-14890-9	.TERMINAL BOARD ASSY (TB1)	1
84	XDFDD	81205	182-14890-10	.TERMINAL BOARD ASSY (TB2)	1
85	XDFDD	81205	182-14890-11	.TERMINAL BOARD ASSY (TB3)	1
86	PAFZZ	80205	NAS603-9P	.SCREW,MACHINE	10
87	XDFZZ	81205	182-14884-1	.BRACKET ASSY	1
88	XDFZZ	81205	182-14884-2	.HINGE	1
89	XDFZZ	81205	182-14884-3	.PANEL,REAR	1
90	XDFZZ	81205	182-14884-4	.BRACKET	1
91	PAFZZ	96906	MS21075L3	.NUT,SELF-LOCKING,PL	12
92	XDFZZ	81205	BACT12-AC2	.LUG,WIRE	V
93	XDFZZ	81205	BACT12-AC3	.LUG,WIRE	V
94	PAFZZ	96906	MS35333-38	.WASHER,LOCK	2
95	XDFFF	81205	182-14894-1	.PANEL,FRONT	1

SECTION II					
(1)	(2)	(3)	(4)	(5)	(6)
ITEM	SMR		PART		
NO	CODE	FSCM	NUMBER	DESCRIPTION AND USABLE ON CODE (UOC)	QTY
96	PAFZZ	81349	M63540/1-15	..STUD, SELF-LOCKING	9
97	PAFZZ	81349	M63540/1-38C	..STUD, SELF-LOCKING	2
END OF FIGURE					

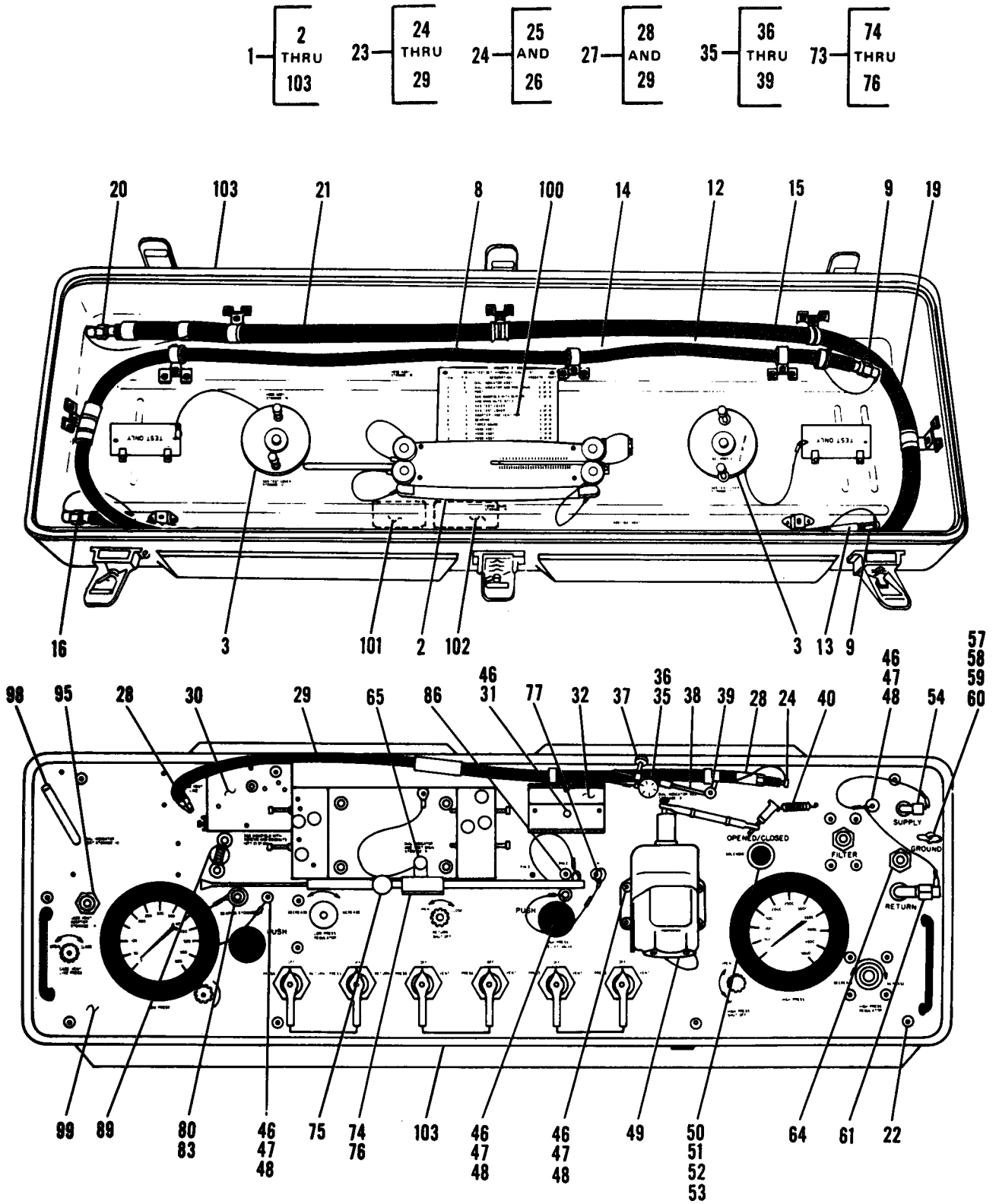


Figure 4. Hydraulic Unit ILCA (Sheet 1 of 4)

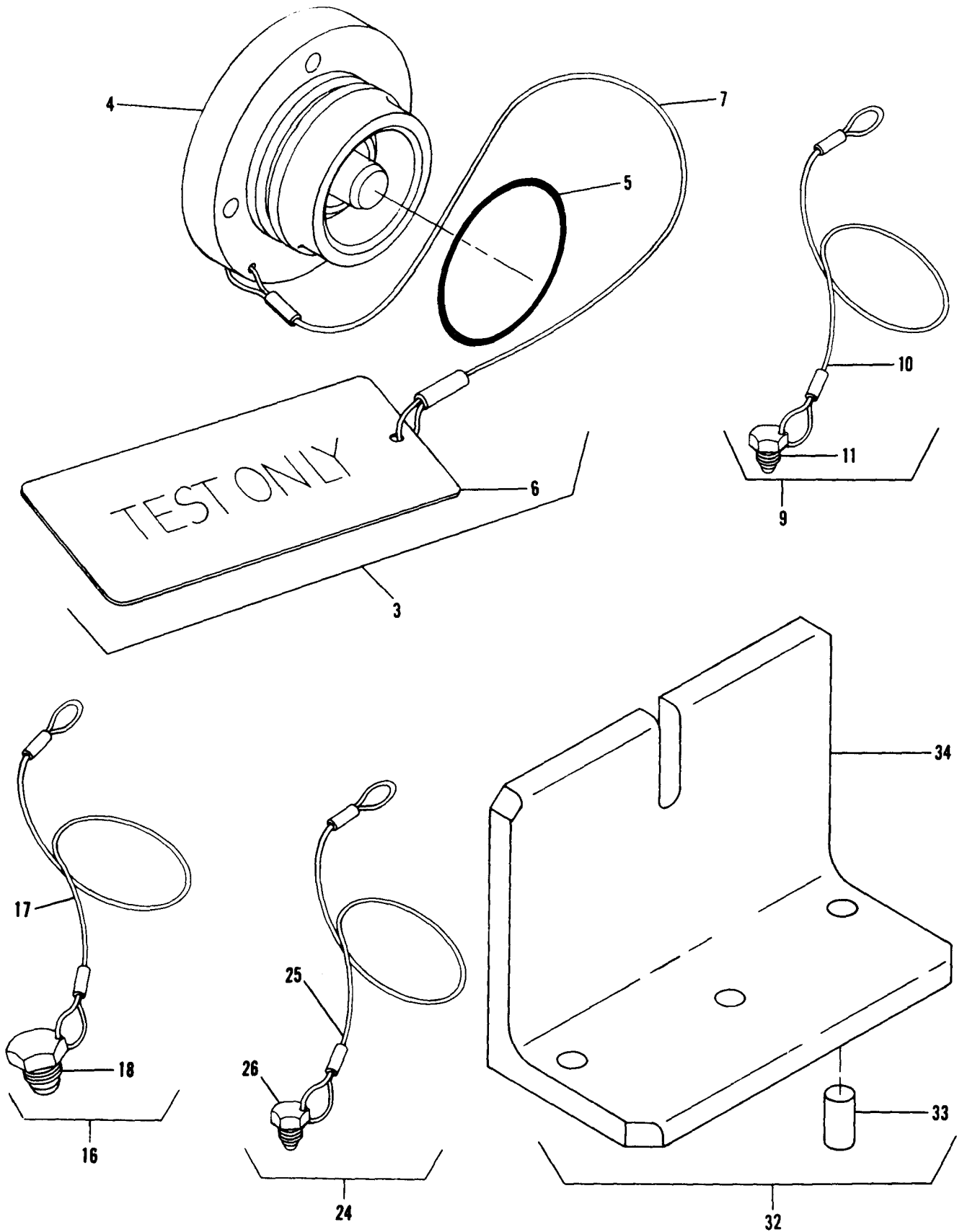


Figure 4. Hydraulic Unit, ILCA (Sheet 2 of 4)

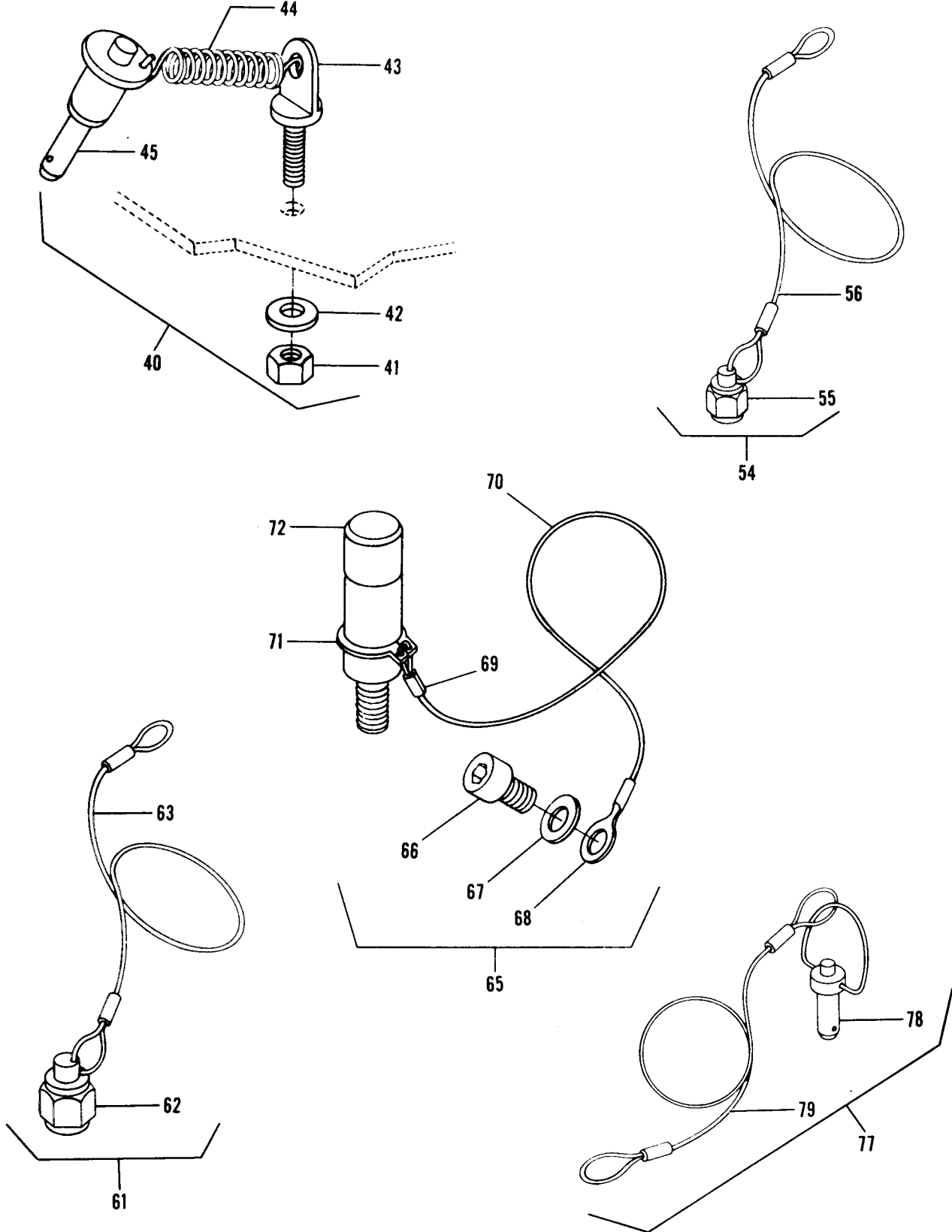


Figure 4. Hydraulic Unit, ILCA (Sheet 3 of 4)

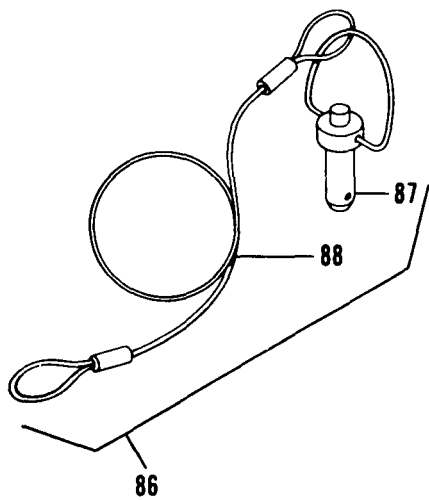
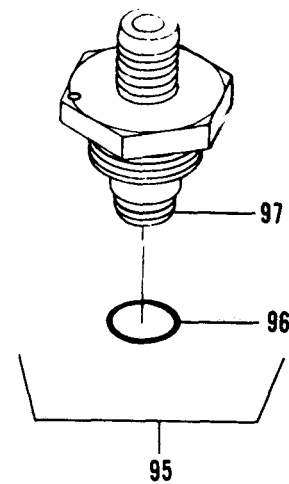
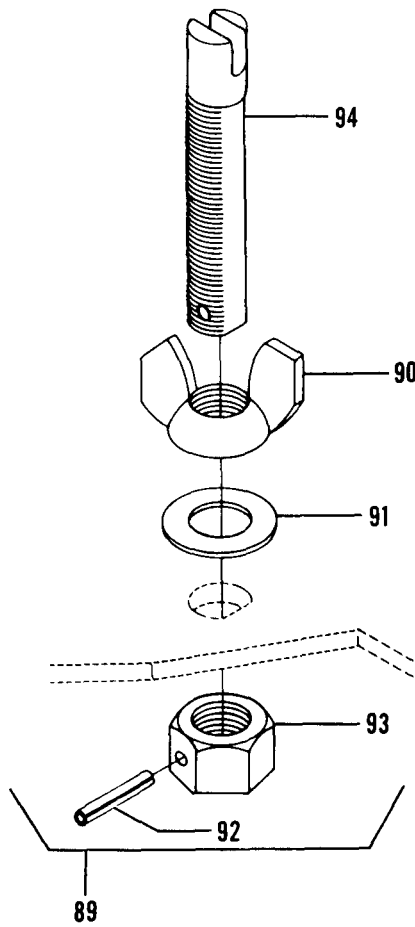
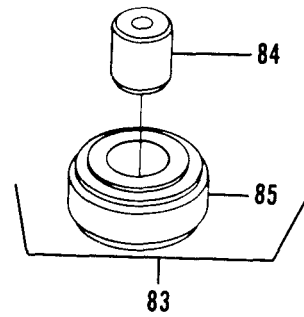
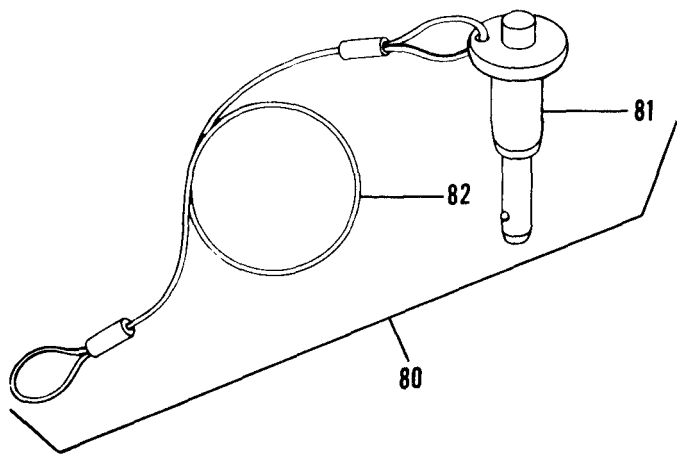


Figure 4. Hydraulic Unit, ILCA (Sheet 4 of 4)

SECTION II (1) ITEM NO	(2) SMR CODE	(3) FSCM	TM55-4920-428-30P (4) PART NUMBER	C01 (5) DESCRIPTION AND USABLE ON CODE (UOC)	(6) QTY
GROUP 02, HYDRAULIC UNIT					
FIGURE 4. HYDRAULIC UNIT, ILCA/SAS					
1	PBFDD	77272	145GS278-2	HYDRAULIC UNIT(182-14937-12)	REF
2	PBFLH	11710	80D	.TESTER,SPRING RESIL	1
3	XDFZZ	77272	145GS278-13	.COVER,TEST,SAS	1
3	PBFZZ	81205	182-14947-1	.COVER ASSY,TEST (182-14947-1)	2
4	XDFZZ	81205	182-14947-3	..COVER	1
5	PAFZZ	96906	MS28775-128	..PACKING,PREFORME	1
6	XDFZZ	81205	182-14947-2	..COVER TAG	1
7	XDFZZ	81205	BACC13Y-3-40	..CABLE ASSY (UT7101-8R1)	1
8	XDFZZ	77272	145GS278-18	.HOSE ASSY (182-14937-5)	1
9	XDFZZ	81349	182-14937-7	..CABLE PLUG ASSY	2
10	XDDZZ	81205	UT7101-4-RL	...CABLE ASSY	1
11	XDDZZ	88044	AN806-4D	...PLUG	1
12	PBFZZ	96906	MS28759-4-0960	..HOSE ASSEMBLY,NONME	1
13	PADZZ	96906	MS28760-4	...ADAPTER,STRAIGHT,TU	V
14	PADZZ	81349	MILH8788-8	...HOSE,NONMETALLIC	V
15	AFVFF	81205	182-14937-6	.HOSE ASSY (182-14937-6)	1
16	XDFZZ	81205	182-14937-8	..PLUG CABLE ASSY	2
17	XDFZZ	81205	BACC13Y3A60	...CABLE ASSY	1
18	PAFZZ	96906	MS24404D8	...PLUG,TUBE FITTING,T	1
19	PBFZZ	96906	MS28759H0960	..HOSE ASSEMBLY,NONME	1
20	PADZZ	96906	MS28760-8	...ADAPTER,STRAIGHT,TU	V
21	XDDZZ	81349	MIL-H-8788	...HOSE .50 OD X 96 IN	1
22	PAFZZ	96906	MS35191-289	.SCREW,MACHINE	12
23	XDFZZ	81205	182-14937-4	.HOSE ASSY (182-14937-4)	1
24	XDFZZ	81205	182-14937-7	..CABLE PLUG ASSY	1
25	XAFZZ	81205	BACC13Y3A60	...CABLE ASSY	1
26	PAFZZ	96906	MS24404-4	...PLUG,TUBE FITTING,T	1
27	PBFZZ	96906	MS28759E0360	..HOSE ASSEMBLY,NONME M/F HOSE,P/N MIL-H-8788-4	1
28	PADZZ	96906	MS28760-4	...ADAPTER,STRAIGHT,TU	2
29	XDDZZ	81349	MIL-H-8788	...HOSE .25 OD X 36 IN	1
30	XDFVFF	77272	145GS278-11	.MANIFOLD ASSY AFCS (182-14943-2)	1
SEE FIG 6 FOR BKDN					
31	PAFZZ	96906	MS16998-45	.SCREW,CAP,SOCKET HE	1
32	XDFZZ	81205	182-14948-1	.RIGGING FIXTURE ASS	1
33	XAFZZ	80205	NAS607-4-4	..PIN,STRAIGHT,HEA	2
34	XAFZZ	81205	182-14948-2	..ANGLE	1
35	XDFZZ	77272	145GS278-8	.INDICATOR,DIAL ASSY	1
36	XDFLL	57163	711HS	..DIAL INDICATOR	1
37	XDFZZ	57163	711-28-29-30	..BODY CLAMP	1
38	XDFZZ	57163	657F	..SWIVEL POST ASSY	1
39	XDFZZ	57163	657R	...SWIVEL POST BUSHING	1
40	AFVFF	81205	182-14957-1	.TIE DOWN ASSY	1
41	PAFZZ	96906	MS21042L4	..NUT,SELF-LOCKING,EX	1
42	PAFZZ	88044	AN960C416L	..WASHER,FLAT	1
43	PAFZZ	88044	AN43-7	..BOLT,EYE	1
44	PAFZZ	96906	MS24586-678	..SPRING EXTENSION	1
45	PAFZZ	96906	MS17984-405	..PIN,QUICK RELEASE	1

SECTION II (1) ITEM NO	(2) SMR CODE	(3) FSCM	TM55-4920-428-30P (4) PART NUMBER	(5) DESCRIPTION AND USABLE ON CODE (UOC)	(6) QTY
46	PAFZZ	96906	MS21042L4	.NUT,SELF-LOCKING,EX	8
47	PAFZZ	88044	AN960-416	.WASHER,FLAT	8
48	PAFZZ	96906	MS16998-42	.SCREW,CAP,SOCKET HE	7
49	XDFZZ	81205	182-14950-1	.CYCLING MOTOR ASSY	1
50	PBFZZ	18876	11509701-002	.SWITCH,PUSH	1
51	PBFZZ	27192	10250TC53	.LENS,LIGHT	1
52	PBFZZ	27192	10250T5	.OPERATOR,ELECTRICAL	1
53	PBFZZ	27192	10250T63	.LIGHT MODULE	1
54	XDFZZ	81205	182-14937-9	.CABLE CAP ASSY	1
55	PAFZZ	88044	AN929A8J	..CAP,TUBE	1
56	XDFZZ	81205	UT-7101-8-L	..CABLE ASSY	1
57	PAFZZ	96906	MS35191-308	.SCREW,MACHINE	1
58	PAFZZ	72962	RMLHTE2860-054W	.NUT,SELF-LOCKING,HE (NAS679A5)	1
59	PAFZZ	88044	AN960PD516	.WASHER,FLAT	2
60	PAFZZ	96906	MS35426-30	.NUT,PLAIN,WING	1
61	XDFZZ	81205	182-14937-10	.CABLE CAP ASSY	1
62	PAFZZ	88044	AN929A8J	..CAP,TUBE	1
63	XDFZZ	81205	UT-7101-8-L	..CABLE ASSY M/F WIRE ROPE UT-7101	1
64	PAFZZ	81349	M83723/85R1412N	..CONNECTOR,RECEPTACL	1
65	PBFZZ	81205	182-15171-1	..THUMB SCREW ASSY	1
66	PAFZZ	96906	MS16998-40	..SCREW,CAP,SOCKET HE	1
67	PAFZZ	88044	AN960-416L	..WASHER,FLAT	1
68	XAFZZ	81205	BACT12AC-54	..TERMINAL LUG	1
69	XAFZZ	81205	BACF22U2	..FERRULE,WIRE ROP	1
70	XAFZZ	81205	UT-7101-8	..CABLE M/F WIRE ROPE UT-7101	1
71	PAFZZ	96906	MS16624-1050	..RING,RETAINING	1
72	XAFZZ	81205	182-15171-2	..THUMB SCREW	1
73	XDFZZ	77272	145GS278-9	..INDICATOR,DIAL ASSY	1
74	XDFLL	57163	25-5041J	..INDICATOR,DIAL	1
75	XDFZZ	57163	657H	..SNUG SWIVEL POST	1
76	XDFZZ	57163	6632/20	..NO 20 IND HEAD	1
77	XDFFF	81205	182-14963-1	.RIGGING PIN NO 1	1
78	PBFZZ	96906	MS17984-411	..PIN,QUICK RELEASE	1
79	XAFZZ	81205	BACC13Y-3B60	..CABLE ASSY M/F WIRE ROPE MIL-W-1511	1
80	XDFFF	81205	182-14963-2	.RIGGING PIN NO 3	1
81	PBFZZ	96906	MS17984-413	..PIN,QUICK RELEASE	1
82	XAFZZ	81205	BACC13Y-3B60	..CABLE ASSY M/F WIRE ROPE MIL-W-1511	1
83	PBFZZ	81205	182-14949-1	..BEARING ASSY	1
84	XAFZZ	81205	182-14949-2	..BUSHING	1
85	XAFZZ	21335	202KLL2	..BEARING,BALL,ANNULA	1
86	XDFFF	81205	182-14963-3	.RIGGING PIN NO 2	1
87	PBFZZ	96906	MS17984-420	..PIN,QUICK RELEASE	1
88	XAFZZ	81205	BACC13Y-3B60	..CABLE ASSY M/F WIRE ROPE MIL-W-1511	1
89	XDFZZ	81205	182-15106-1	..MEASURING PIN ASSY	1
90	XDFZZ	81348	FFN845D TYPE A	..WING NUT ALTERED	1
91	XAFZZ	88044	AN960D1016	..WASHER	1
92	XAFZZ	81205	MS39086-37	..PIN ROLL	1
93	PAFZZ	96906	MS51967-50	..NUT,PLAIN,HEXAGON	1
94	XAFZZ	81205	182-15106-2	..PIN	1

SECTION II				TM55-4920-428-30P	C01	
(1)	(2)	(3)	(4)	(5)		(6)
ITEM	SMR	FSCM	PART	DESCRIPTION AND USABLE ON CODE (UOC)		QTY
NO	CODE		NUMBER			
95	AFFFF	77272	145GS278-14	.ADAPTER VENT ASSY(182-14939-1)		1
96	PAFZZ	96906	MS28775-012	..PACKING,PREFORMED		1
97	PBFZZ	81205	182-14939-2	..ADAPTER		1
98	XDFZZ	77272	145GS278-10	.POST ALTERED(657G)		1
99	XDFFF	81205	182-14961-1	.CHASIS ASSY		1
100	XDFZZ	81205	182-14937-2	.LABEL EQUIP PLATE		1
101	XDFZZ	81205	182-14937-3	.LABEL-EQUIPT PLATE		1
102	XDFZZ	81205	182-14937-11	.LABEL EQUIP PLATE		1
103	XDFFF	81205	182-14966-1	.CASE ASSY		1

END OF FIGURE

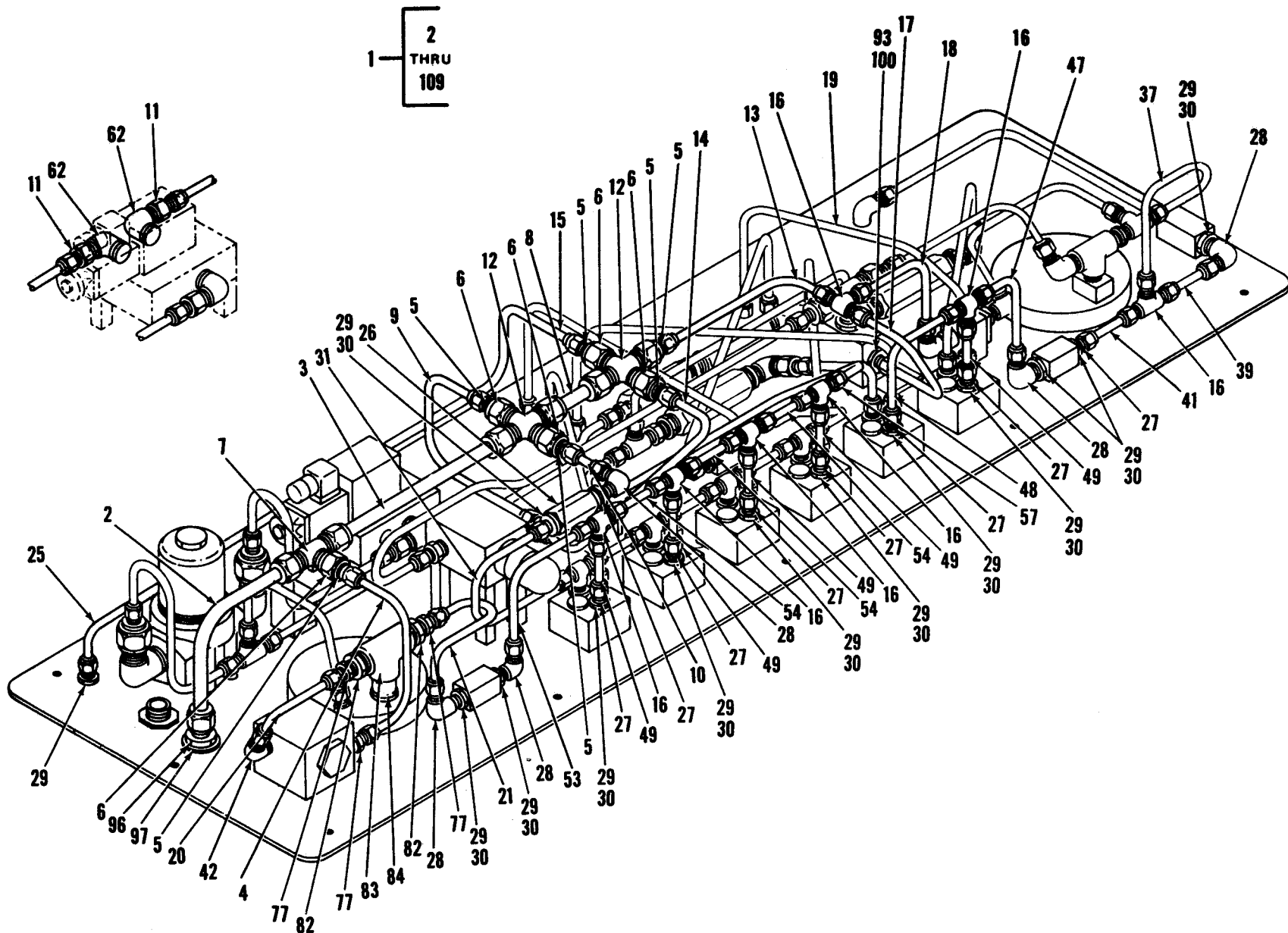


Figure 5. Chassis Assy (Sheet 1 of 5)

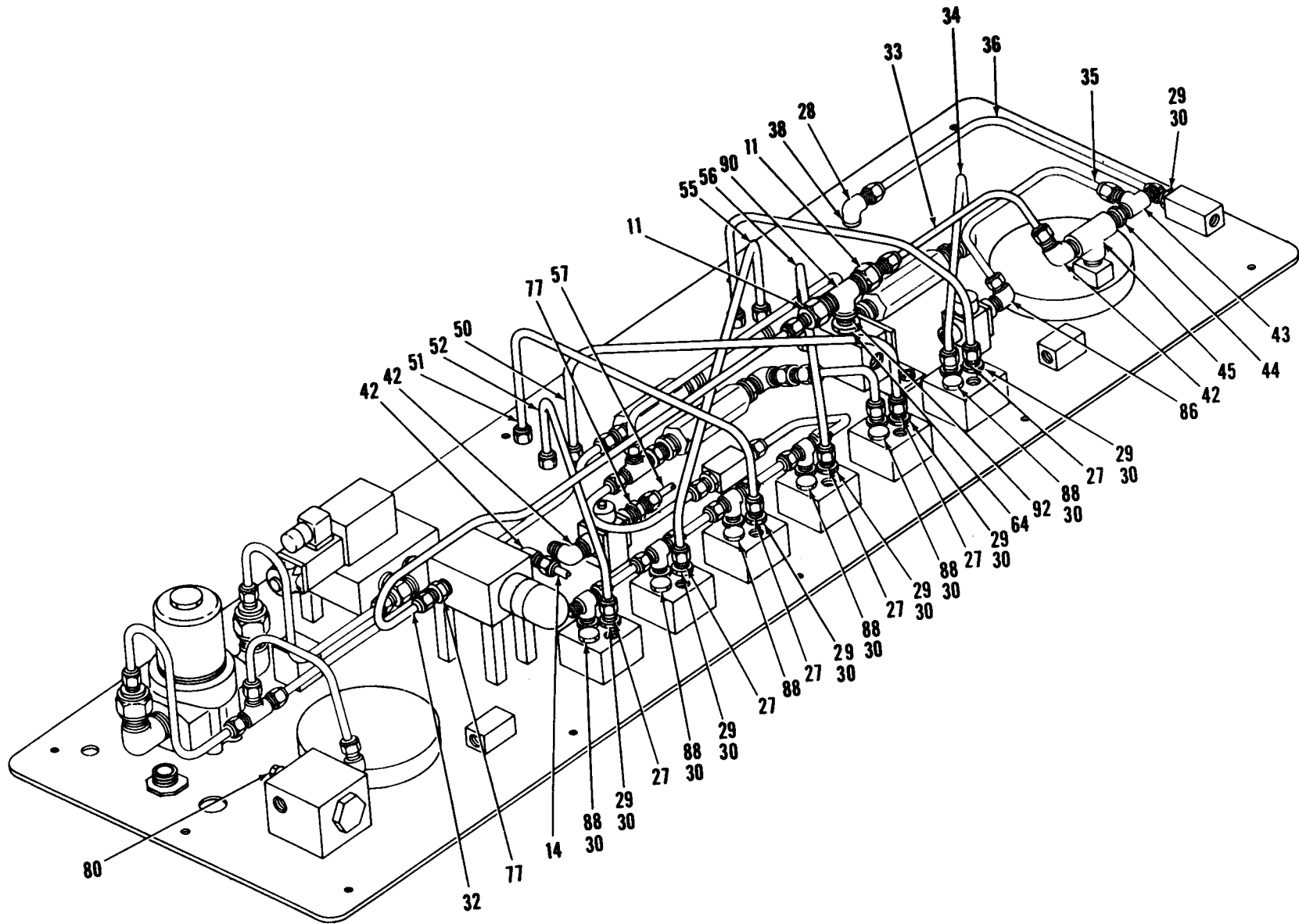


Figure 5. Chassis Assy (Sheet 2 of 5)

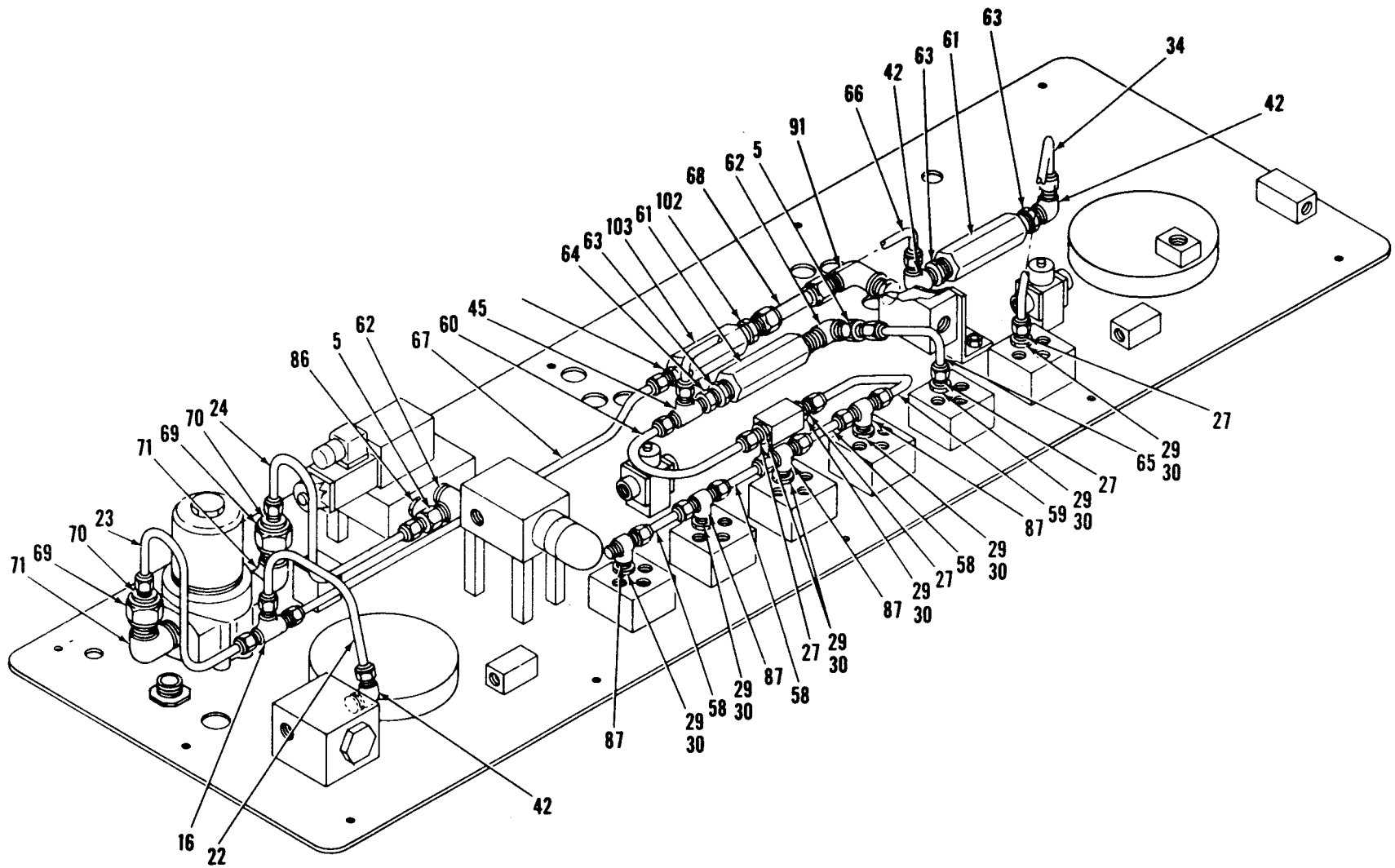


Figure 5. Chassis Assy (Sheet 3 of 5)

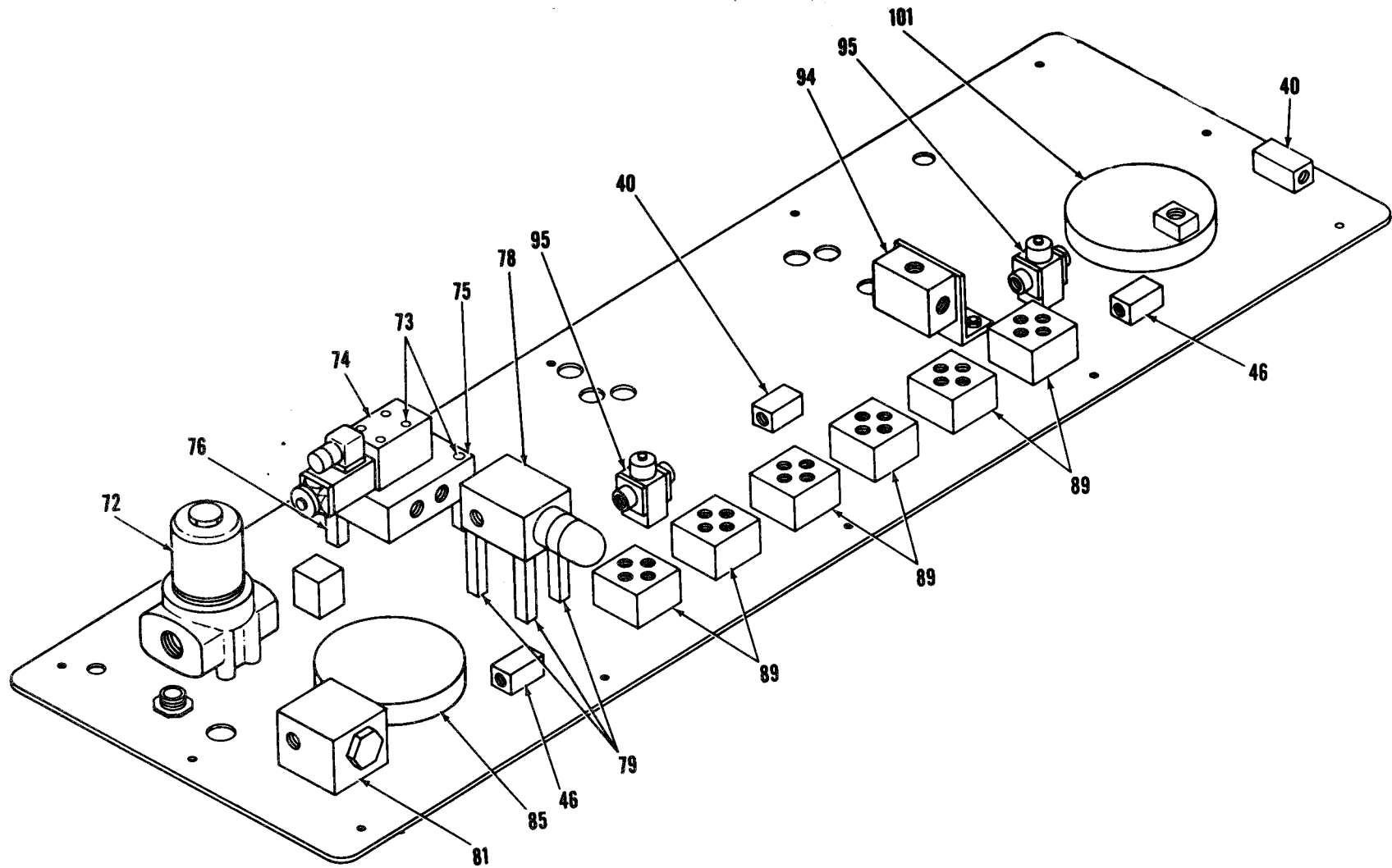


Figure 5. Chassis Assy (Sheet 4 of 5)

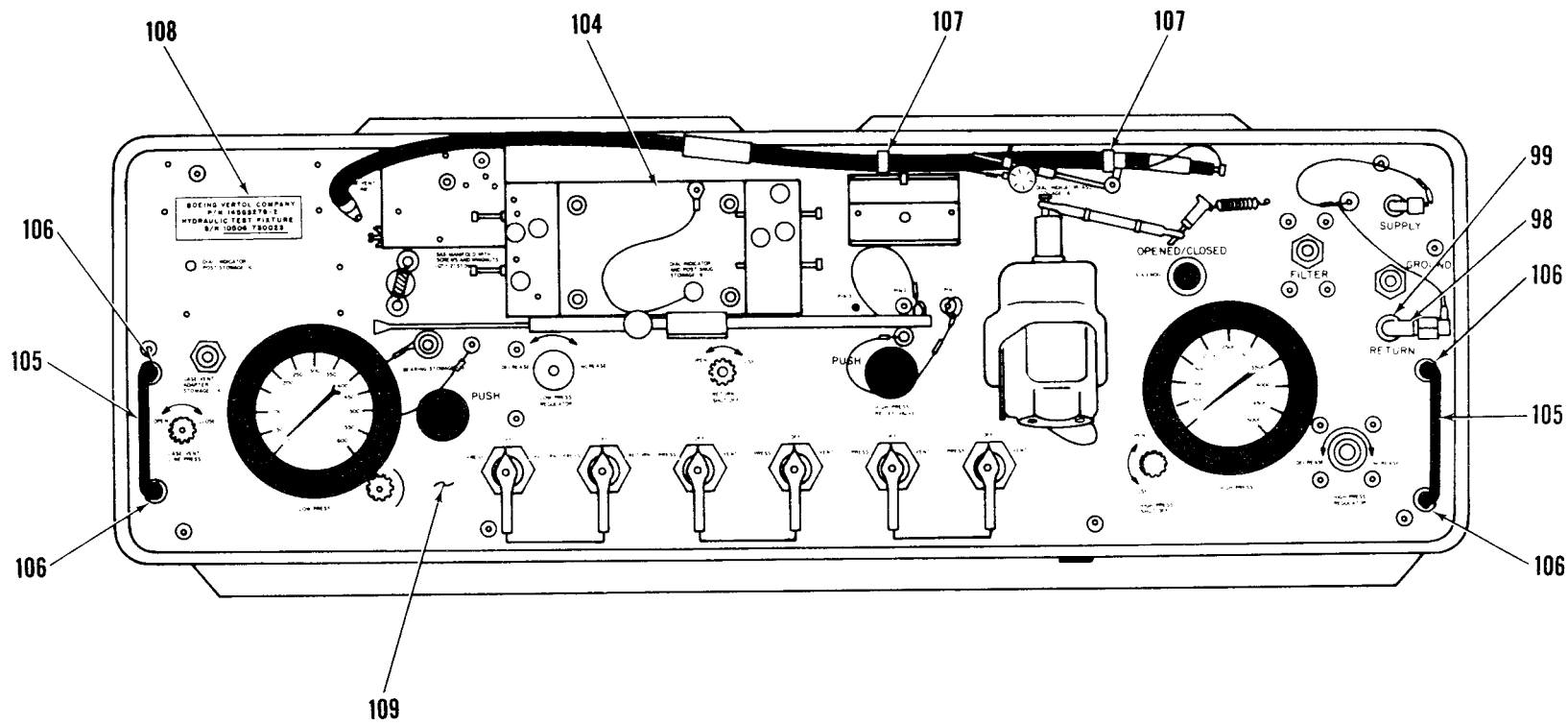


Figure 5. Chassis Assy (Sheet 5 of 5)

SECTION II (1) ITEM NO	(2) SMR CODE	(3) FSCM	TM55-4920-428-30P (4) PART NUMBER	(5) DESCRIPTION AND USABLE ON CODE (UOC)	(6) QTY
GROUP 02. HYDRAULIC UNIT					
FIGURE 5. CHASSIS ASSY HYDRAULIC UNIT					
1	XDFFF	81205	182-14961-1	CHASSIS ASSY HYDRAULIC UNIT SEE FIG 4 FOR NHA	1
2	XDFZZ	81205	182-15288-66	.TUBE M/F CRES TUBE 1/2 AISI	1
3	XDFZZ	81205	182-15288-65	.TUBE M/F CRES TUBE 1/2 AISI 321	1
4	XDFZZ	81205	182-15288-56	.TUBE M/F HYD TUBE SAE-J-524 JIC	1
5	PAFZZ	96906	MS51534A6-4	.REDUCER BODY,TUBE	11
6	PAFZZ	88044	AN924-4D	.NUT,PLAIN,HEXAGON	6
7	PAFZZ	96906	MS24402-8	.TEE,TUBE	1
8	XDFZZ	81205	182-15288-54	.TUBE M/F HYD TUBE SAE-J-524 JIC	1
9	XDFZZ	81205	182-15288-52	.TUBE M/F HYD TUBE SAE-J-524 JIC	1
10	XDFZZ	81205	182-15288-49	.TUBE M/F HYD TUBE SAE-J-524 JIC	1
11	PAFZZ	96906	MS51534A8-4	.REDUCER BODY,TUBE	6
12	PAFZZ	88044	AN827-8	.CROSS,TUBE	1
13	XDFZZ	81205	182-15288-37	.TUBE M/F HYD TUBE SAE-J-524 JIC	1
14	XDFZZ	81205	182-15288-53	.TUBE M/F HYD TUBE SAE-J-524 JIC	1
15	XDFZZ	81205	182-15288-64	.TUBE M/F HYD TUBE SAE-J-524-JIC	2
16	PAFZZ	96906	MS24402D4	.TEE,TUBE (AN824-4)	7
17	XDFZZ	81205	182-15288-51	.TUBE M/F HUD TUBE SAE-J-524 JIC	1
18	XDFZZ	81205	182-15288-59	.TUBE M/F HYD TUBE SAE-J-524 JIC	1
19	XDFZZ	81205	182-15288-44	.TUBE M/F HYD TUBE SAE-J-524 JIC	1
20	XDFZZ	81205	182-15288-14	.TUBE M/F HYD TUBE SAE-J-524 JIC	1
21	XDFZZ	81205	182-15288-15	.TUBE M/F HYD TUBE SAE-J-524 JIC	1
22	XDFZZ	81205	182-15288-13	.TUBE M/F HYD TUBE SAE-J-524 JIC	1
23	XDFZZ	81205	182-15288-12	.TUBE M/F HYD TUBE SAE-J-524 JIC	1
24	XDFZZ	81205	182-15288-11	.TUBE M/F HYD TUBE SAE-J-524 JIC	1
25	XDFZZ	81205	182-15288-10	.TUBE M/F HUD TUBE SAE-J-524 JIC	1
26	PBFZZ	96259	3C11-4T-3	.VALVE,CHECK	1
27	PAFZZ	96906	MS24392D4	.VALVE,STOP-CHECK	19
28	PAFZZ	96906	MS24394D4	.ELBOW,TUBE (MS24394-4)	7
29	PAFZZ	88044	AN924-4D	.NUT,PLAIN,HEXAGON	11
30	PAFZZ	96906	MS28778-4	.PACKING,PREFORMED	34
31	XDFZZ	81205	182-15288-60	.TUBE M/F HYD TUBE SAE-J-524 JIC	1
32	XDFZZ	81205	182-15288-61	.TUBE M/F HYD TUBE SAE-J-524 JIC	1
33	XDFZZ	81205	182-15288-62	.TUBE M/F HYD TUBE SAE-J-524 JIC	1
34	XDFZZ	81205	182-15288-40	.TUBE M/F HYD TUBE SAE-J-524 JIC	1
35	XDFZZ	81205	182-15288-50	.TUBE M/F HYD TUBE SAE-J-524 JIC	1
36	XDFZZ	81205	182-15288-48	.TUBE M/F HYD TUBE SAE-J-524 JIC	1
37	XDFZZ	81205	182-15288-63	.TUBE M/F HYD TUBE SAE-J-524 JIC	1
38	PAFZZ	88044	AN960KD716	.WASHER,FLAT	2
39	XDFZZ	81205	182-15288-47	.TUBE M/F HYD TUBE SAE-J-524 JIC	1
40	PAFZZ	59793	AV-8-1.0/12-P-S	.VALVE,SHUTOFF	2
41	XDFZZ	81205	182-15288-46	.TUBE M/F HYD TUBE SAE-J-524 JIC	1
42	PAFZZ	96906	MS20822-4-4D	.ELBOW,PIPE TO TUBE (MS20822-4-4)	9
43	PAFZZ	88044	AN917-2J	.TEE,PIPE	1
44	XDFZZ	88044	AN912-1S	.BUSHING	2
45	PAFZZ	96906	MS20826-4S	.TEE,FLANGE	2

SECTION II (1) ITEM NO	(2) SMR CODE	(3) FSCM	TM55-4920-428-30P (4) PART NUMBER	(5) DESCRIPTION AND USABLE ON CODE (UOC)	(6) QTY
46	PAFZZ	59793	DV-8-1.0/12-P-S	.NEEDLE VALVE	2
47	XDFZZ	81205	182-15288-45	.TUBE M/F HYD TUBE SAE-J-524 JIC	1
48	XDFZZ	81205	182-15288-41	.TUBE M/F HYD TUBE SAE-J-524 JIC	1
49	XDFZZ	81205	182-15288-24	.TUBE M/F HYD TUBE SAE-J-524 JIC	1
50	XDFZZ	81205	182-15288-43	.TUBE M/F HYD TUBE SAE-J-524 JIC	1
51	XDFZZ	81205	182-15288-19	.TUBE M/F HYD TUBE SAE-J-524 JIC	1
52	XDFZZ	81205	182-15288-17	.TUBE M/F HYD TUBE SAE-J-524 JIC	1
53	XDFZZ	81205	182-15288-16	.TUBE M/F HYD TUBE SAE-J-524 JIC	1
54	XDFZZ	81205	182-15288-25	.TUBE M/F HYD TUBE SAE-J-524 JIC	1
55	XDFZZ	81205	182-15288-18	.TUBE M/F HYD TUBE SAE-J-524 JIC	1
56	XDFZZ	81205	182-15288-20	.TUBE M/F HYD TUBE SAE-J-524 JIC	1
57	XDFZZ	81205	182-15288-28	.TUBE M/F HYD TUBE SAE-J-524 JIC	1
58	XDFZZ	81205	182-15288-33	.TUBE M/F HYD TUBE SAE-J-524 JIC	1
59	XDFZZ	81205	182-15288-35	.TUBE M/F HYD TUBE SAE-J-524 JIC	1
60	XDFZZ	81205	182-15288-36	.TUBE M/F HYD TUBE SAE-J-524 JIC	1
61	PBFZZ	24785	DL-03-F-10A1	.VALVE,CHECK	2
62	PAFZZ	96906	MS20822-6D	.ELBOW,PIPE TO TUBE (MS20922-6)	4
63	XDFZZ	88044	AN912-2S	.BUSHING	3
64	XDFZZ	88044	AN818-6S	.NUT	6
65	XDFZZ	81205	182-15288-39	.TUBE M/F HYD TUBE SAE-J-524 JIC	1
66	XDFZZ	81205	182-15288-38	.TUBE M/F HYD TUBE SAE-J-524 JIC	1
67	XDFZZ	81205	182-15288-57	.TUBE M/F HYD TUBE SAE-J-524 JIC	1
68	XDFZZ	81205	182-15288-58	.TUBE M/F HYD TUBE SAE-J-524 JIC	1
69	XDFZZ	88044	AN818-12S	.NUT,COUPLING	2
70	XDFZZ	83259	TRTX12-4SS	.REDUCER	2
71	PAFZZ	96906	MS20822-12D	.ELBOW,PIPE TO TUBE (MS20822-8-12)	2
72	PBFFF	59793	MDFV60G5B100/12	.FILTER ASSEMBLY,ELE (MDFV60G5B30/5)	1
73	PAFZZ	27005	833365	.BOLT KIT	1
74	XDFZZ	16309	SP01-18	.SUBPLATE	1
75	PAFZZ	27005	4WE6D51/NZ4/5	.VALVE SOLENOID (4WE6D52/NZ4)	1
76	XDFZZ	81205	182-14964-1	.STANDOFF	2
77	XDFZZ	88044	AN816-4-4D	.ADAPTER,STRAIGHT,PI	6
78	PAFZZ	27005	BDB56G12/25/5	.VALVE,PRESSURE	1
79	XDFZZ	81205	182-14962-5	.STANDOFF	4
80	PAFZZ	88044	AN933D2	.PLUG,PIPE	1
81	PAFZZ	86768	PR6701-2-1/4S2	.VALVE,REGULATING,FL	1
82	PAFZZ	88044	AN912-5J	.BUSHING,PIPE	2
83	PAFZZ	88044	AN917-4D	.TEE,PIPE	1
84	PAFZZ	81205	182-15178-1	.SNUBBER,PRESS	1
85	PBFZZ	81205	1377DS-04B	.GAGE,TEST	1
86	PAFZZ	88044	AN933D3	.PLUG,PIPE	3
87	XDFZZ	88044	AN834-4S	.TEE	4
88	PAFZZ	88044	AN814-4D	.PLUG,MACHINE THREAD	6
89	PAFZZ	86768	8422E-4D2P	.VALVE,ROTARY,DIRECT	6
90	XDFZZ	88044	AN834-6S	.TEE	1
91	XDFZZ	96906	MS24394S6	.ELBOW	1
92	XDFZZ	88044	AN919-6S	.REDUCER	1
93	XDFZZ	88044	AN924-6S	.NUT,PLAIN,HEXAGON	2
94	PBFZZ	54846	PRV2-10-K-6T-25	.VALVE,PRESSURE REDU	1
95	PAFZZ	86768	689B3-1-4D2	.VALVE,STOP-CHECK	2
96	PAFZZ	81352	AN924-8D	.NUT,PLAIN,HEXAGON	1

SECTION II				TM55-4920-428-30P		
(1)	(2)	(3)	(4)	(5)		(6)
ITEM	SMR	FSCM	PART	DESCRIPTION AND USABLE ON CODE (UOC)		QTY
NO	CODE		NUMBER			
97	PAFZZ	88044	AN960KD1216	.WASHER, FLAT		1
98	PAFZZ	96906	MS24394D8	.ELBOW, TUBE		1
99	PAFZZ	96906	MS24398D12-8	.BUSHING, MACHINE THR (AN894-12-8)		1
100	PAFZZ	96906	MS28778-6	.PACKING, PREFORMED		3
101	XDFLL	38508	E3464B	.GAUGE 0-600 PSI		1
102	XDFZZ	88044	AN816-6S	.ADAPTER, STRAIGHT, PI		1
103	PBFZZ	24207	KLF250S	.VALVE, LOW PRESSURE		1
104	XDFFF	81205	182-14940-2	.MANIFOLD ASSY ILCA		1
105	XDFZZ	81205	BACH10G2B	.HANDLE		2
106	XDFZZ	81205	BACF32D-1	.FERRULE		4
107	XDFZZ	59730	TC-354A	.CLAMP, ELECTRICAL		2
108	XDFZZ	81205	182-14961-2	.IDENTIFICATION PLAT		1
109	XDFFF	81205	182-14962-1	.PANEL ASSY LOWER SE HYDRAULIC		1
				UNIT SEE FIG 8 FOR BKDN		

END OF FIGURE

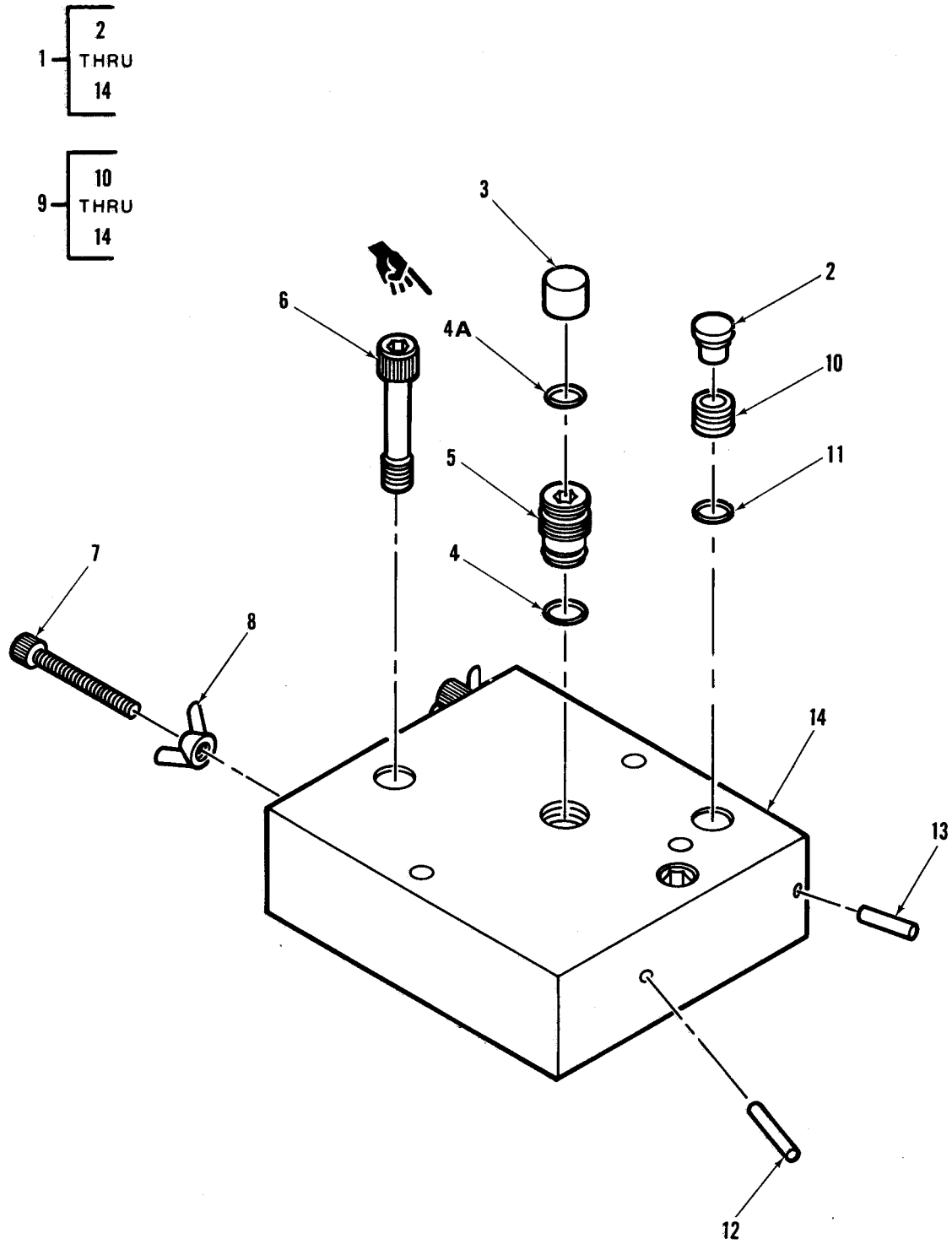


Figure 6. Manifold Assy

SECTION II		C01		TM55-4920-428-30P			
(1)	(2)	(3)	(4)	(5)		(6)	
ITEM	SMR		PART				
NO	CODE	FSCM	NUMBER	DESCRIPTION AND USABLE ON CODE (UOC)		QTY	
GROUP 02. HYDRAULIC UNIT							
FIGURE 6. MANIFOLD ASSY							
1	XDFFF	77272	145GS278-11	MANIFOLD ASSY AFCS(182-14943-2)		REF	
2	PBFZZ	95760	WW4	.CAP-PLUG, PROTECTIVE		1	
3	PAFZZ	99017	7/16SCX3/8	.CAP, PROTECTIVE		1	
4	PAFZZ	96906	MS28775-011	.PACKING, PREFORMED		1	
4A	PAFZZ	81205	MS28775-012	.PACKING, PREFORMED		1	
5	XDFZZ	81205	182-14945-2	.TRANSFER SPOOL		1	
6	PBFZZ	81205	182-14946-1	.SCREW, CAP		2	
7	PAFZZ	96906	MS16998-33	.SCREW, CAP, SOCKET HE		2	
8	PAFZZ	96906	MS35426-13	.NUT, PLAIN, WING		2	
9	XAFZZ	81205	182-14944-1	.MANIFOLD SUB ASSY		1	
10	XDFZZ	81205	182-14944-5	..INSERT		1	
11	PAFZZ	96906	MS28775-012	..PACKING, PREFORMED		1	
12	XAFZZ	81205	182-14944-3	..PLUG		1	
13	XAFZZ	81205	182-14944-4	..PLUG		1	
14	XAFZZ	81205	182-14944-2	..BLOCK		1	
END OF FIGURE							

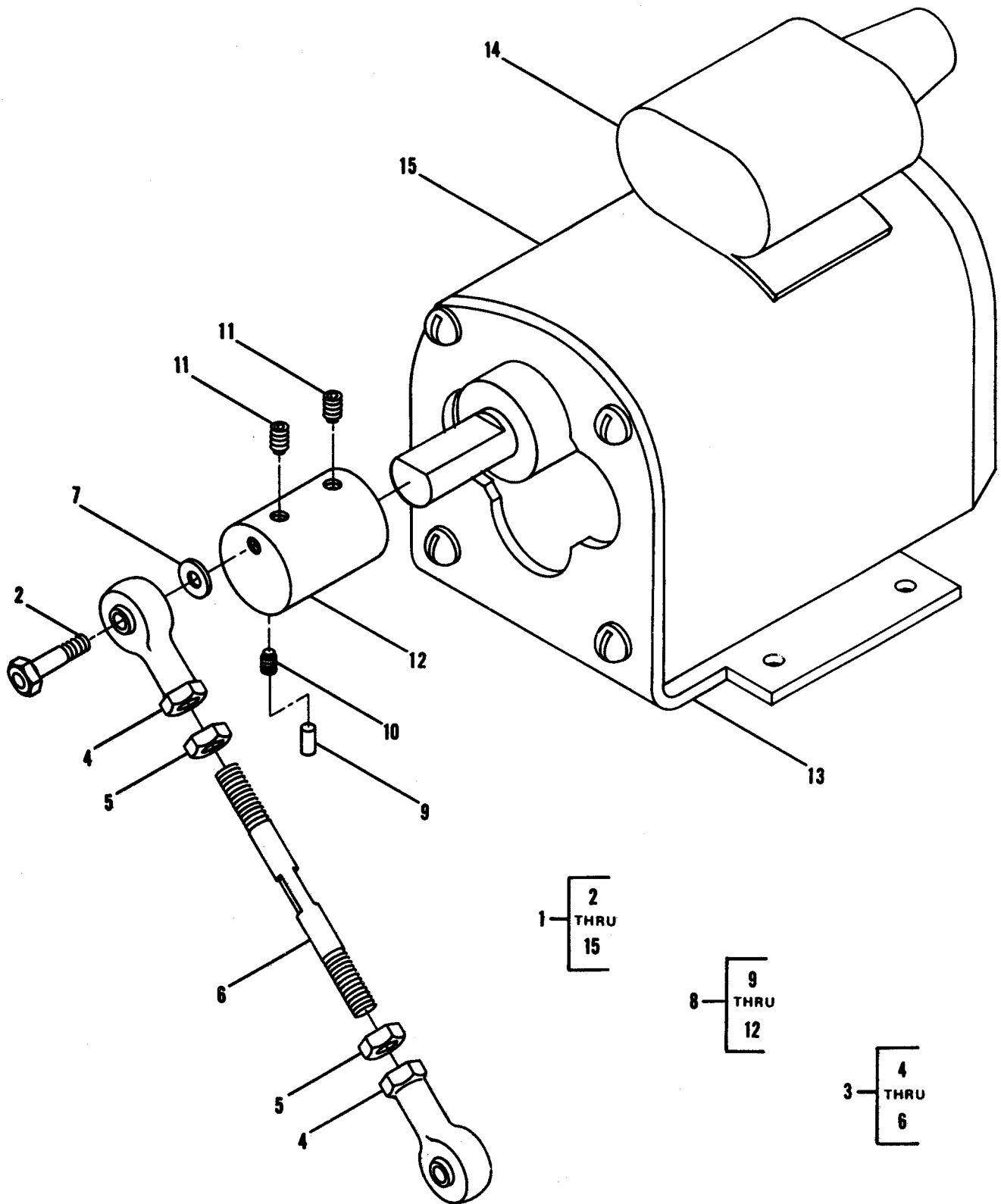


Figure 7. Cycling Motor Assy

SECTION II				TM55-4920-428-30P		
(1)	(2)	(3)	(4)	(5)		(6)
ITEM	SMR		PART			
NO	CODE	FSCM	NUMBER	DESCRIPTION AND USABLE ON CODE (UOC)		QTY
				GROUP 02. HYDRAULIC UNIT		
				FIGURE 7. MOTOR ASSY, CYCLING		
1	XDFZZ	81205	182-14950-1	CYCLING MOTOR ASSY SEE FIG 4 FOR NHA		1
2	PAFZZ	80205	NAS1304-8DH	.BOLT,SHEAR		1
3	XDFZZ	81205	182-14951-1	.CRANK ARM ASSY		1
4	XDFZZ	81205	BACB10AE-4	..BEARING,ROD END (MS21243-4)		2
5	PAFZZ	96906	MS35650-3312	..NUT,PLAIN,HEXAGON		2
6	XDFZZ	81205	182-14951-2	..ARM		1
7	PAFZZ	80205	NAS620-416	.WASHER,FLAT		1
8	AFFFF	81205	182-14952-1	.DRIVER CRANK ASSY		1
9	XDFZZ	81205	182-14952-3	..PLUG		1
10	PAFZZ	96906	MS51963-222	..SETSCREW		1
11	PAFZZ	96906	MS51963-242	..SETSCREW		2
12	PBFZZ	81205	182-14952-2	..DRIVER		1
13	XDFZZ	07829	968	.MOUNTING KIT		1
14	XDFZZ	07829	957	.CAPACITOR		1
15	XDFZZ	07829	461	.MOTOR,N-1D GEAR		1
				END OF FIGURE		

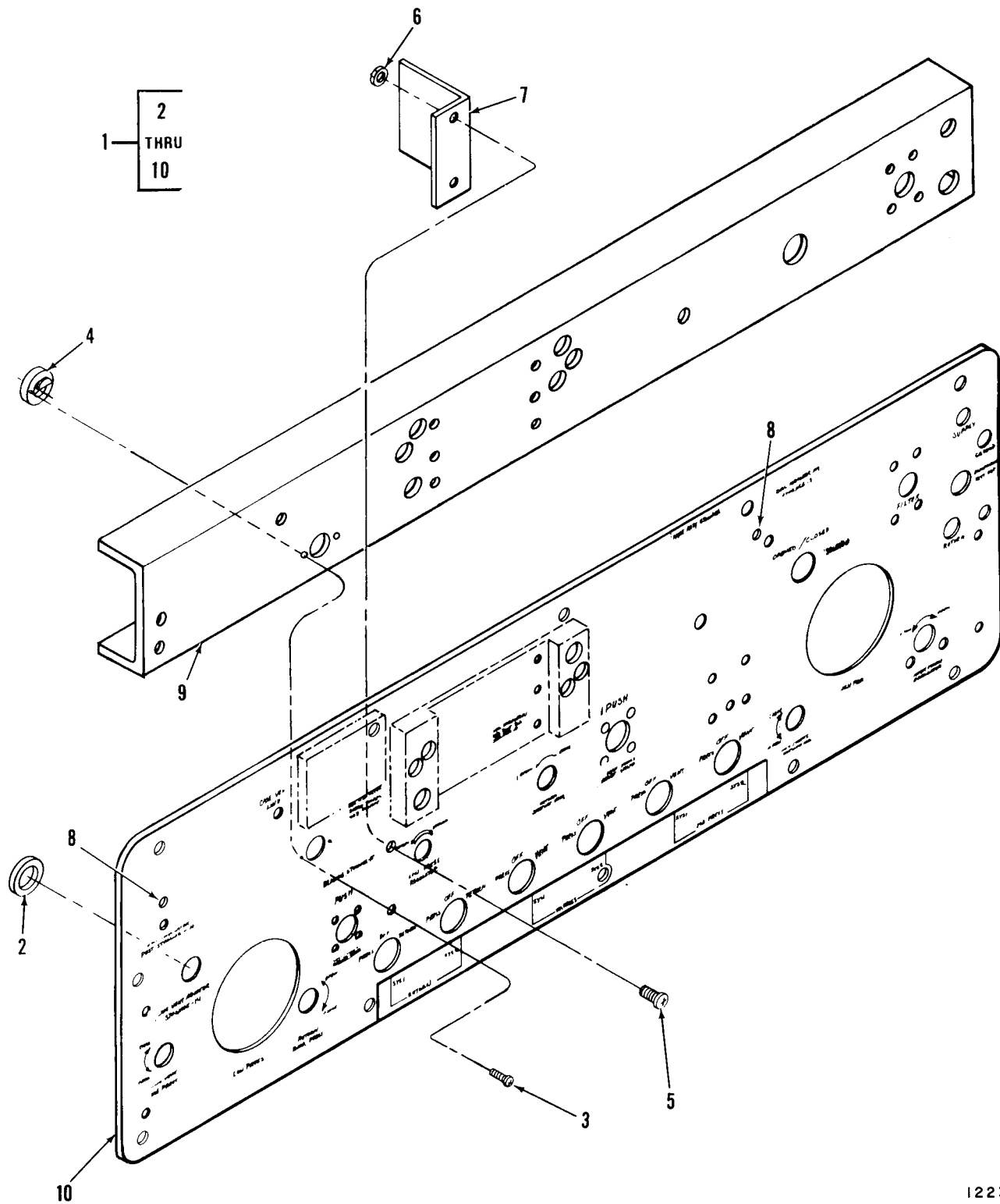


Figure 8. Lower panel Assy

SECTION II		TM55-4920-428-30P				
(1)	(2)	(3)	(4)	(5)	(6)	
ITEM	SMR		PART			
NO	CODE	FSCM	NUMBER	DESCRIPTION AND USABLE ON CODE (UOC)		QTY
GROUP 02. HYDRAULIC UNIT						
FIGURE 8. PANEL ASSY, LOWER CASE, HYDRAULIC UNIT						
1	XDFFF	81205	182-14962-1	PANEL ASSY LOWER)HYDRAULIC UNIT SEE FIG 5 FOR NHA		1
2	XDFZZ	81205	182-14962-4	.DISK		1
3	XDFZZ	96906	MS35190-238	.SCREW,MACHINE		2
4	XDFZZ	81205	182-14962-7	.FILLER		1
5	PAFZZ	96906	MS35191-291	.SCREW,MACHINE		2
6	PAFZZ	96906	MS21042L4	.NUT,SELF-LOCKING,EX		2
7	XDFZZ	81205	182-14962-6	.BRACKET		1
8	PAOZZ	96906	MS51831-102	.INSERT,SCREW THREAD		2
9	XDFZZ	81205	182-14962-3	.CHANNEL		1
10	XAFZZ	81205	182-14962-2	.PANEL		1
END OF FIGURE						

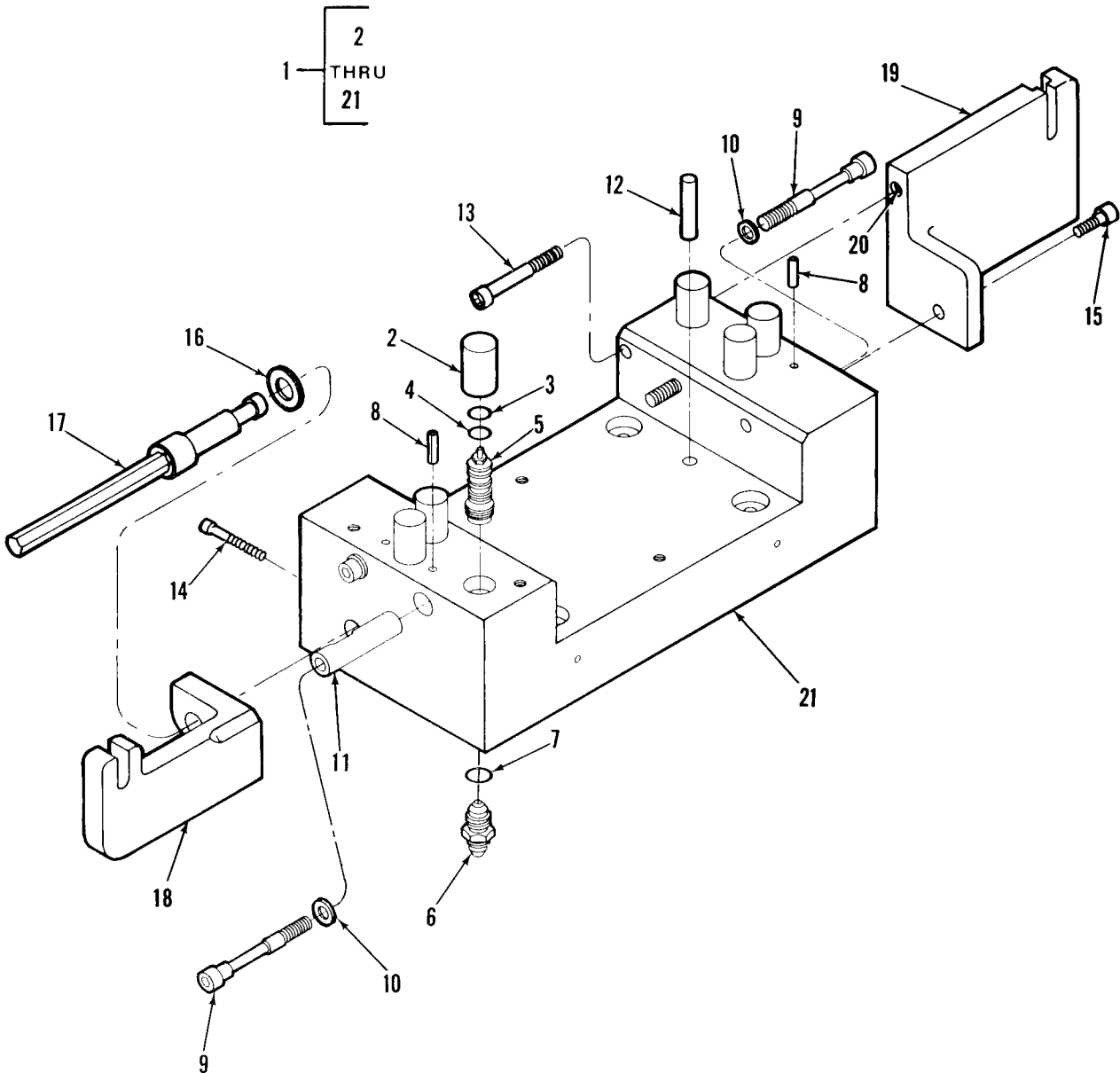


Figure 9. Manifold Assy

SECTION II (1) ITEM NO	(2) SMR CODE	(3) FSCM	TM55-4920-428-30P (4) PART NUMBER	(5) DESCRIPTION AND USABLE ON CODE (UOC)	(6) QTY
GROUP 02. HYDRAULIC UNIT					
FIGURE 9. MANIFOLD ASSY					
1	XDFFF	81205	182-14940-2	MANIFOLD ASSY ILCA FIG 5 FOR NHA	1
2	PAFZZ	81349	M5501/9-F10	.CAP,PROTECTIVE,DUST	6
3	PAFZZ	96906	MS28775-013	.PACKING,PREFORMED	6
4	PAFZZ	96906	MS28775-014	.PACKING,PREFORMED	6
5	PBFZZ	77272	145H1288-1	.CHECK VALVE ASSEMBL	6
6	PAFZZ	96906	MS24392-4	.NIPPLE,TUBE	6
7	PAFZZ	96906	MS28778-4	.PACKING,PREFORMED	6
8	XDFZZ	81205	182-15597-1	.SCREW RETAINER	4
9	PBFZZ	81205	182-14946-2	.SCREW,CAP	4
10	PAFZZ	88044	AN960-416	.WASHER,FLAT	4
11	PBFZZ	81205	182-14942-1	.BUSHING	2
12	PAFZZ	80205	NAS607-4-6	.PIN,STRAIGHT,HEADLE	2
13	PAFZZ	96906	MS16998-49	SCREW,CAP,SOCKET HE	1
14	PAFZZ	96906	MS16997-24	SCREW,CAP,SOCKET HE	1
15	PAFZZ	96906	MS16998-43	SCREW,CAP,SOCKET HE	1
16	PAFZZ	88044	AN960-816	WASHER,FLAT	1
17	XDFZZ	81205	182-15596-1	HANDLE,RIGGING	1
18	XDFZZ	81205	182-15595-2	FIXTURE RIGGING	1
19	XDFZZ	81205	182-15595-1	FIXTURE RIGGING	1
20	PAFZZ	96906	MS21209F4-15	.INSERT,SCREW THREAD	1
21	XDFZZ	81205	182-14941-1	.MANIFOLD	1
END OF FIGURE					

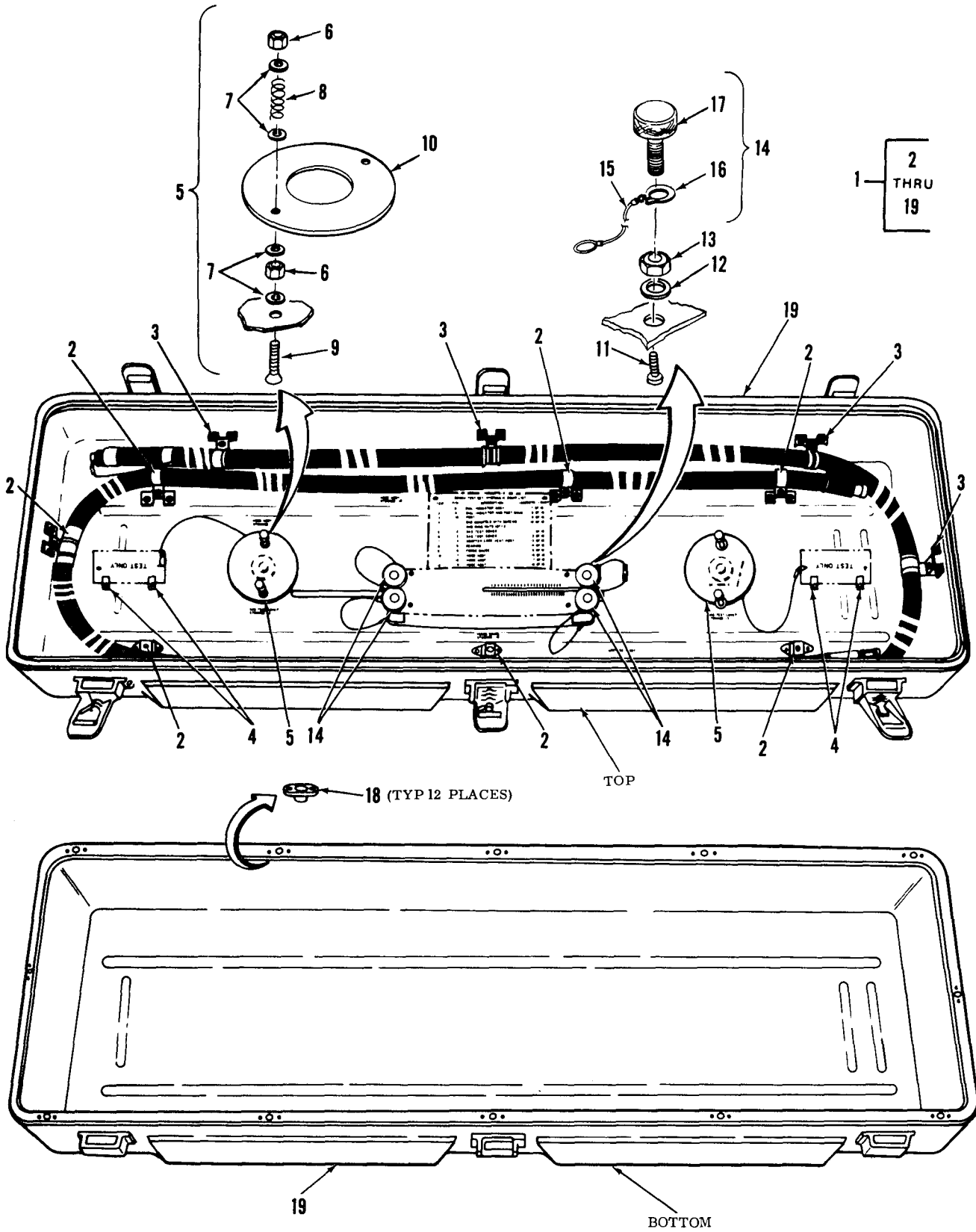


Figure 10. Case Assy

SECTION II		TM55-4920-428-30P				
(1)	(2)	(3)	(4)	(5)	(6)	
ITEM	SMR		PART			
NO	CODE	FSCM	NUMBER	DESCRIPTION AND USABLE ON CODE (UOC)		QTY
GROUP 02. HYDRAULIC UNIT						
FIGURE 10. CASE ASSY						
1	XDFFF	81205	182-14966-1	CASE ASSY		REF
2	PBFZZ	84971	5002BH10-02	.CLAMP,HOSE,METAL		7
3	PAFZZ	84971	TA5000BH1402	.CLAMP,LOOP		7
4	XDFZZ	81205	BACC10T3	.CLIP		4
5	XDFFF	81205	182-14965-1	.RETAINER COVER		2
6	PAFZZ	80205	NAS679C4M	..NUT,SELF-LOCKING,HE		4
7	PAFZZ	88044	AN960C416L	..WASHER,FLAT		8
8	PBFZZ	96906	MS24585C229	..SPRING,HELICAL,COMP		2
9	PAFZZ	80205	NAS1189E4P24	..SCREW,MACHINE		2
10	XDFZZ	81205	182-14965-2	..DISK		1
11	PAFZZ	80205	NAS604-12P	.SCREW,MACHINE		4
12	PAFZZ	88044	AN960D416	.WASHER,FLAT		4
13	PAFZZ	96906	MS21042L4	.NUT,SELF-LOCKING,EX		4
14	XDFFF	81205	182-14966-3	.THUMB SCREW ASSY		4
15	XAFZZ	81205	BACC13Y-3B60	..CABLE ASSY		1
16	PBFZZ	96906	MS16624-1050	..RING,RETAINING		1
17	XAFZZ	81205	UT7113-848	..SCREW,THUMB		1
18	PAFZZ	80205	NAS1773-4	.NUTPLACE		12
19	XDFZZ	81205	182-14966-2	.CASE		1
END OF FIGURE						

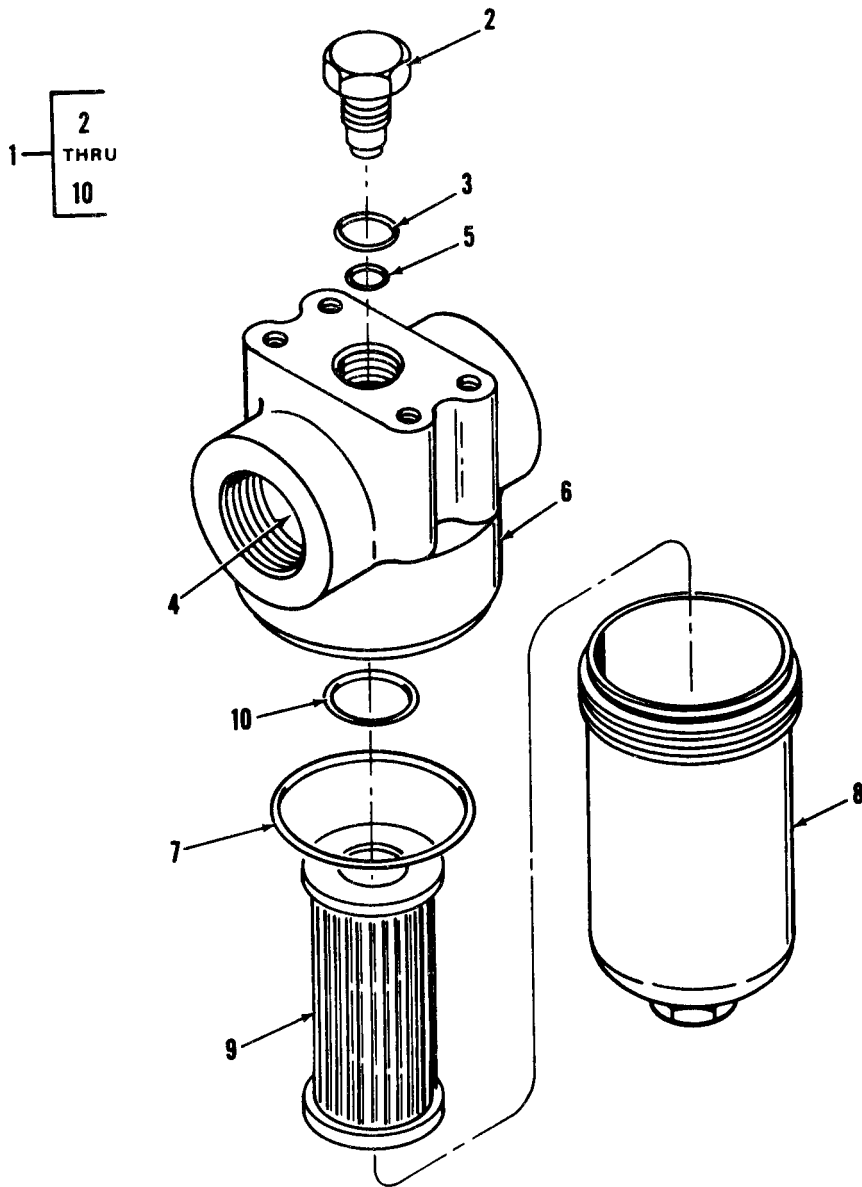


Figure 11. Filter

SECTION II		TM55-4920-428-30P				
(1)	(2)	(3)	(4)	(5)		(6)
ITEM	SMR		PART			
NO	CODE	FSCM	NUMBER	DESCRIPTION AND USABLE ON CODE (UOC)		QTY
GROUP 02. HYDRAULIC UNIT						
FIGURE 11. FILTER						
1	PBFFF	59793	MDFV60G5B100/12	FILTER ASSEMBLY ELE		REF
2	XDFZZ	59793	744-1001MDF60-5	.PLUG INDICATOR		1
3	PAFZZ	59793	744-1001MDF60-8	.PACKING,PREFORMED		1
4	XDFZZ	59793	744-1001MDF60-4	.BYPASS		1
5	PAFZZ	59793	744-1001MDF60-9	.PACKING,PREFORMED		1
6	XAFZZ	59793	744-1001MDF60-3	.HEAD		1
7	PAFZZ	59793	744-1001MDF60-6	.PACKING,PREFORMED		1
8	XAFZZ	59793	744-1001MDF60-2	.BOWL SEDIMENT		1
9	PAFZZ	59793	MDF0060D005BN	.FILTER ELEMENT,FLUI		1
10	PAFZZ	59793	744-1001MDF60-7	.PACKING,PREFORMED		1
END OF FIGURE						

SECTION II (1) ITEM NO	(2) SMR CODE	(3) FSCM	TM55-4920-428-30P (4) PART NUMBER	(5) DESCRIPTION AND USABLE ON CODE (UOC)	(6) QTY
GROUP 03.BULK MATERIALS					
1	XDDZZ	81205	BMS13-16 AWG-22	WIRE	V
2	XDDZZ	81205	BMS13-16 AWG-18	WIRE	V
3	PADZZ	81349	M22759-16-20-9	WIRE,ELECTRICAL	V
4	PADZZ	81349	M22759-16-16-9	WIRE,ELECTRICAL	V
5	XDFZZ	81349	MIL-W-81822/3	WIRE,BUSS AWG22	V
6	XDDZZ	81205	BMS13-16 AWG-26	WIRE	V
7	XDDZZ	81205	BMS13-16 AWG-28	WIRE	V
8	XDDZZ	81205	BMS13-16 AWG-18	WIRE	V
9	PADZZ	81349	M7928/5-5	SPLICE,CONDUCTOR	V
10	XDDZZ	80205	NAS1388-2	SPLICE,CONDUCTOR	V
11	PADZZ	80205	NAS1388-1	SPLICE,CONDUCTOR	V
12	PADZZ	80205	NAS1387-3	SPLICE,CONDUCTOR	V
13	PADZZ	80205	NAS1387-2	SPLICE,CONDUCTOR	V
14	XDDZZ	26512	GS805K	SPLICE,CONDUCTOR	V
15	XDDZZ	81205	BACT12-AC3	LUG,WIRE	V
16	XDDZZ	81205	BACT12-AC2	LUG WIRE	V
17	XDDZZ	81205	S1BS3863	TIEWRAP	V
18	PADZZ	81348	SN96WRAP3 0.032 1LB	SOLDER,TIN ALLOY	V
19	XDDZZ	81205	S52-1-(.25)-9	SLEEVING EXPANDABLE	V
20	XDDZZ	81349	MIL-I-22129/3	SLEEVE,TEFLON	V
21	XDDZZ	81205	BMS1347A	IDENT TAPE TUBE	V
22	PADZZ	96906	MS18029-12S16	COVER,TERMINAL B	V
23	PADZZ	96906	MS18029-22	NUT ASSEMBLY	V
24	PADZZ	96906	MS27212-2-16	TERMINAL BOARD	V
25	PADZZ	96906	MS20426A4-9	RIVET,SOLID	V
26	PADZZ	96906	MS20470B6-7	RIVET,SOLID	V
27	PADZZ	96906	MS20470A4-6	RIVET,SOLID	V
28	PADZZ	96906	MS20426D3-6	RIVET,SOLID	V
29	PADZZ	96906	MS20001P8-7200	HINGE,BUTT	V
30	XDDZZ	81343	SAE-J524	TUBE HYD 1/4 OD	V
31	XDDZZ	81343	AISI 321	TUBE,METALLIC	V
32	XDDZZ	92194	FIT-400-3	TUBING SHRINK	V
33	XDDZZ	92194	FIT-400-1	TUBING,SHRINK	V
34	PADZZ	00624	309-4	HOSE,NONMETALLIC	V
35	PADZZ	18604	303	ADHESIVE	V
36	PADZZ	19207	856468	ROPE,WIRE	V
37	XDDZZ	81205	BACF22U2	FERRULE,WIRE ROP	V
38	XDDZZ	81205	UT-7101-2F	FERRULE	V
39	XDDZZ	81205	UT-7101	CABLE,NYLON COATED	V

END OF FIGURE

BULK-1

SECTION III. SPECIAL TOOLS LIST

(Not Applicable)

NATIONAL STOCK NUMBER AND PART NUMBER INDEX

NATIONAL STOCK NUMBER INDEX

STOCK NUMBER	FIG	ITEM	STOCK NUMBER	FIG	ITEM
5935-00-005-8857	2	11	5310-00-515-7449	10	7
5930-00-009-4577	3	71	4820-00-518-3742	5	95
5905-00-013-9582	3	67	4730-00-541-2745	5	43
4010-00-032-2938	BULK	36	4730-00-541-4252	4	13
5310-00-045-3296	3	39		4	28
5310-00-045-4007	3	80	4730-00-541-4253	4	20
5305-00-052-6763	3	25	4730-00-542-4994	4	26
5310-00-054-4892	7	5	4730-00-554-8139	5	80
5310-00-081-8087	3	77	5340-00-558-3003	BULK	29
5940-00-082-5023	3	24	5310-00-559-0070	3	94
	BULK	22	5365-00-580-5312	3	15
5310-00-088-0551	3	10	5330-00-582-2133	6	4
5320-00-117-6396	BULK	28	5330-00-584-0265	4	96
5320-00-119-6773	BULK	26		6	11
5940-00-136-9188	BULK	13	5330-00-584-1840	9	4
5310-00-141-1795	4	47	5306-00-616-2759	7	2
	9	10	4730-00-622-1617	5	82
5940-00-143-5147	BULK	11	5935-00-622-2723	2	5
5940-00-156-7196	3	82		2	9
5310-00-167-0740	10	12	5310-00-622-9531	3	13
5310-00-167-0816	3	81	5310-00-631-1294	3	79
5310-00-167-0823	9	16	4730-00-640-5854	5	86
5310-00-167-0831	3	9	5310-00-655-7219	7	7
5310-00-167-0834	3	28	4730-00-676-3075	5	11
5310-00-167-0835	4	67	5310-00-680-7105	4	58
5310-00-167-0839	1	16	4720-00-683-8830	BULK	34
5940-00-168-3316	BULK	12	5365-00-684-2093	3	40
8040-00-181-7711	BULK	35	5330-00-684-3420	9	3
4730-00-186-9963	5	42	4730-00-684-6911	9	6
4730-00-186-9968	5	62	5315-00-687-5084	9	12
5310-00-187-2399	4	59	5330-00-702-5643	4	5
4730-00-197-2917	5	98	6635-00-705-5469	4	2
5935-00-199-7619	2	4	4730-00-706-8711	5	5
5305-00-222-2990	3	12	5940-00-716-6595	1	19
5310-00-253-2798	4	93	4720-00-720-1993	4	12
5306-00-260-7580	4	43	5310-00-720-8549	6	8
5305-00-261-3798	3	20	5320-00-721-5211	BULK	27
5320-00-264-3275	BULK	25	4720-00-721-6072	4	19
4730-00-277-7953	5	12	4730-00-722-1207	5	16
5310-00-282-7835	5	96	4730-00-725-4351	5	28
5365-00-287-0094	5	88	4720-00-727-0829	4	27
4730-00-287-1027	5	71	5935-00-729-5559	3	35
4730-00-287-3694	5	83	5940-00-752-0188	1	17
6240-00-383-7668	3	66	5310-00-772-3720	3	91
5935-00-407-2513	3	54	5940-00-802-7263	1	15
3439-00-411-5097	BULK	18	5365-00-802-9319	5	99
5305-00-428-0734	3	31	5935-00-803-1445	3	36
5340-00-451-8982	8	8	5365-00-803-7301	4	71
5340-00-514-2777	6	2		10	16
5310-00-515-7449	4	42	5330-00-804-5695	5	100

NATIONAL STOCK NUMBER AND PART NUMBER INDEX

NATIONAL STOCK NUMBER INDEX

STOCK NUMBER	FIG	ITEM	STOCK NUMBER	FIG	ITEM
4730-00-804-7944	5	7	5305-01-015-7160	3	8
5330-00-805-2966	5	30	5935-01-025-4360	2	13
	9	7	5310-01-041-9170	5	6
5310-00-807-1475	4	41		5	29
	4	46	6145-01-042-4621	BULK	3
	8	6	6145-01-044-8799	BULK	4
	10	13	5935-01-044-9598	2	8
5310-00-811-3494	3	4	5305-01-051-8029	7	11
5305-00-813-2789	3	75	5940-01-059-6704	1	18
5305-00-813-2791	3	86	5330-01-070-8206	3	57
5305-00-813-2796	3	56	4730-01-077-6473	4	18
5310-00-813-3232	10	6	5940-01-079-1936	BULK	9
4730-00-815-7970	4	55	5305-01-083-1597	7	10
	4	62	5925-01-091-1253	3	69
5365-00-815-9049	3	16	5310-01-108-7503	3	30
	3	76	5940-01-109-7472	3	34
5365-00-817-4840	3	14	5310-01-111-6717	5	38
5340-00-829-2141	9	20	5340-01-117-7701	10	3
5360-00-834-3477	10	8	4820-01-122-6302	9	5
4730-00-834-9560	5	27	5310-01-134-2732	4	60
5305-00-841-9826	3	29	5310-01-137-8983	5	97
5305-00-841-9827	3	73	5310-01-138-5511	10	18
5305-00-842-0240	3	72	6625-01-139-4544	1	2
5310-00-877-5797	3	27	4820-01-139-4715	5	61
5340-00-904-5212	4	81	6625-01-140-6770	3	47
5340-00-904-5214	4	78	1650-01-141-7581	5	84
5340-00-904-5225	4	45	4810-01-141-8716	5	94
5340-00-904-5230	4	87	4820-01-141-8717	5	103
5940-00-907-5938	BULK	23	5305-01-141-8718	9	9
5930-00-918-6887	4	50	5305-01-141-8719	4	65
5310-00-934-9758	3	38	5340-01-142-0995	6	3
5940-00-950-7784	3	26	4810-01-142-0996	5	78
	BULK	24	2990-01-142-0997	5	40
5305-00-958-6373	3	3	5340-01-142-0998	9	11
5305-00-967-2024	10	11	4730-01-142-0999	10	2
5305-00-978-9352	9	14	6210-01-142-1000	4	53
5940-00-983-6084	3	21	5975-01-142-1001	4	52
5305-00-983-6657	4	66	6645-01-142-1003	3	70
5305-00-983-6659	4	48	5330-01-142-1005	11	10
5305-00-983-6660	9	15	5330-01-142-1006	11	3
5305-00-983-6662	4	31	5330-01-142-1007	11	5
5305-00-983-6666	9	13	4920-01-142-2648	1	20
5305-00-983-7430	6	7		4	1
5305-00-984-7350	4	57	6110-01-142-2825	3	5
5305-00-988-3784	4	22	5305-01-143-9191	10	9
5305-00-988-3785	8	5	5930-01-144-0374	3	68
5305-00-989-5002	3	6	4730-01-144-0879	4	97
5305-00-991-6542	3	17	5305-01-144-0880	6	6
5935-01-005-3579	2	12	5210-01-144-1883	5	85
5935-01-014-2936	2	3	4820-01-144-3695	5	46

NATIONAL STOCK NUMBER AND PART NUMBER INDEX

NATIONAL STOCK NUMBER INDEX

STOCK NUMBER	FIG	ITEM	STOCK NUMBER	FIG	ITEM
4820-01-144-3755	5	81			
3010-01-144-3783	7	12			
4820-01-144-3784	5	89			
4330-01-144-3802	11	9			
4810-01-144-6309	5	75			
5930-01-144-9002	3	52			
5306-01-144-9003	5	73			
3110-01-145-0840	4	83			
5340-01-145-3212	4	3			
5360-01-145-3268	4	44			
6625-01-145-4527	3	59			
5340-01-145-9346	3	16			
5930-01-146-7382	3	63			
5935-01-147-6956	2	7			
5935-01-147-6967	3	53			
5935-01-147-6968	3	33			
5935-01-147-6970	3	74			
5930-01-148-2987	3	65			
5930-01-148-2988	3	64			
5930-01-148-2989	3	62			
5330-01-148-6219	11	7			
5935-01-159-2358	4	64			
5930-01-159-5242	3	51			
6210-01-162-2186	4	51			
5930-01-163-6218	3	61			
5307-01-203-2484	3	97			
4730-01-248-6313	5	45			

NATIONAL STOCK NUMBER AND PART NUMBER INDEX

PART NUMBER INDEX

FSCM	PART NUMBER	STOCK NUMBER	FIG	ITEM
81343	AISI 321		BULK	31
88044	AN43-7	5306-00-260-7580	4	43
88044	AN806-4D		4	11
88044	AN814-4D	5365-00-287-0094	5	88
88044	AN816-4-4D		5	77
88044	AN816-6S		5	102
88044	AN818-12S		5	69
88044	AN818-6S		5	64
88044	AN827-8	4730-00-277-7953	5	12
88044	AN834-4S		5	87
88044	AN834-6S		5	90
88044	AN912-1S		5	44
88044	AN912-2S		5	63
88044	AN912-5J	4730-00-622-1617	5	82
88044	AN917-2J	4730-00-541-2745	5	43
88044	AN917-4D	4730-00-287-3694	5	83
88044	AN919-6S		5	92
88044	AN924-4D	5310-01-041-9170	5	6
			5	29
88044	AN924-6S		5	93
81352	AN924-8D	5310-00-282-7835	5	96
88044	AN929A8J	4730-00-815-7970	4	55
			4	62
88044	AN933D2	4730-00-554-8139	5	80
88044	AN933D3	4730-00-640-5854	5	86
88044	AN960-10L	5310-00-167-0834	3	28
88044	AN960-4L	5310-00-167-0831	3	9
88044	AN960-416	5310-00-141-1795	4	47
			9	10
88044	AN960-416L	5310-00-167-0835	4	67
88044	AN960-6	5310-00-167-0816	3	81
88044	AN960-816	5310-00-167-0823	9	16
88044	AN960-816L	5310-00-167-0839	1	16
88044	AN960C416L	5310-00-515-7449	4	42
			10	7
88044	AN960D1016		4	91
88044	AN960D416	5310-00-167-0740	10	12
88044	AN960KD1216	5310-01-137-8983	5	97
88044	AN960KD716	5310-01-111-6717	5	38
88044	AN960PD516	5310-00-187-2399	4	59
59793	AV-8-1.0/12-P-S	2990-01-142-0997	5	40
81205	BACB10AE-4		7	4
81205	BACC10T3		10	4
81205	BACC13Y3A60	4010-00-373-1407	4	17,25
81205	BACC13Y-3-40		4	7
81205	BACC13Y-3B60		4	79
			4	82
			4	88
			10	15
81205	BACF22U2		4	69
			BULK	37
81205	BACF32D-1		5	106

NATIONAL STOCK NUMBER AND PART NUMBER INDEX

PART NUMBER INDEX

FSCM	PART NUMBER	STOCK NUMBER	FIG	ITEM
81205	BACH10G2B		5	105
81205	BACJ11AB1-02	5935-00-803-1445	3	36
81205	BACJ11AB1-03	5935-00-729-5559	3	35
81205	BACS53B1EA2	5940-01-109-7472	3	34
81205	BACT12-AC2		3	92
			BULK	16
81205	BACT12-AC3		3	93
			BULK	15
81205	BACT12AC-54		4	68
27005	BDB56G12/25/5	4810-01-142-0996	5	78
81205	BMS13-16 AWG-18		BULK	2
			BULK	8
81205	BMS13-16 AWG-22		BULK	1
81205	BMS13-16 AWG-26		BULK	6
81205	BMS13-16 AWG-28		BULK	7
81205	BMS1347A		BULK	21
15084	BP249-A2G4		3	50
15084	BP249-105R		3	49
58474	BP30-10Y	5940-00-802-7263	1	15
58474	BP30GN	5940-00-752-0188	1	17
58474	BP30WT	5940-00-716-6595	1	19
71744	CM7-7632	6240-00-383-7668	3	66
58474	BP30R	5940-01-059-6704	1	18
24785	DL-03-F-10A1	4820-01-139-4715	5	61
59793	DV-8-1.0/12-P-S	4820-01-144-3695	5	46
38508	E3464B		5	101
81348	FFN845D TYPE A		4	90
92194	FIT-400-1		BULK	33
92194	FIT-400-3		BULK	32
26512	GS805K		BULK	14
99813	J1304-4		3	37
24207	KLF250S	4820-01-141-8717	5	103
82227	K19783-HO	6645-01-142-1003	3	70
59793	MDFV60G5B100/12		5	72
			11	1
59793	MDF0060D005BN	4330-01-144-3802	11	9
81349	MIL-H-8788		4	21
			4	29
81349	MIL-I-22129/3		BULK	20
81349	MIL-W-81822/3		BULK	5
81349	MILH8788-8		4	14
55133	MR26W5T5DCUAR	6625-01-145-4527	3	59
96906	MS16624-1050	5365-00-803-7301	4	71
			10	16
96906	MS16997-24	5305-00-978-9352	9	14
96906	MS16998-33	5305-00-983-7430	6	7
96906	MS16998-40	5305-00-983-6657	4	66
96906	MS16998-42	5305-00-983-6659	4	48
96906	MS16998-43	5305-00-983-6660	9	15
96906	MS16998-45	5305-00-983-6662	4	31
96906	MS16998-49	5305-00-983-6666	9	13

NATIONAL STOCK NUMBER AND PART NUMBER INDEX

PART NUMBER INDEX

FSCM	PART NUMBER	STOCK NUMBER	FIG	ITEM
96906	MS17984-405	5340-00-904-5225	4	45
96906	MS17984-411	5340-00-904-5214	4	78
96906	MS17984-413	5340-00-904-5212	4	81
96906	MS17984-420	5340-00-904-5230	4	87
96906	MS18029-12S16	5940-00-082-5023	3	24
			BULK	22
96906	MS18029-22	5940-00-907-5938	BULK	23
96906	MS20001P8-7200	5340-00-558-3003	BULK	29
96906	MS20426A4-9	5320-00-264-3275	BULK	25
96906	MS20426D3-6	5320-00-117-6396	BULK	28
96906	MS20470A4-6	5320-00-721-5211	BULK	27
96906	MS20470B6-7	5320-00-119-6773	BULK	26
96906	MS20822-12D	4730-00-287-1027	5	71
96906	MS20822-4-4D	4730-00-186-9963	5	42
96906	MS20822-6D	4730-00-186-9968	5	62
96906	MS20826-4S	4730-01-248-6313	5	45
96906	MS21042L4	5310-00-807-1475	4	41
			4	46
			8	6
			10	13
96906	MS21044N04	5310-00-088-0551	3	10
96906	MS21044N06	5310-00-081-8087	3	77
96906	MS21044N08	5310-00-811-3494	3	4
96906	MS21044N3	5310-00-877-5797	3	27
96906	MS21075L3	5310-00-772-3720	3	91
96906	MS21209F4-15	5340-00-829-2141	9	20
96906	MS24392-4	4730-00-684-6911	9	6
96906	MS24392D4	4730-00-834-9560	5	27
96906	MS24394D4	4730-00-725-4351	5	28
96906	MS24394D8	4730-00-197-2917	5	98
96906	MS24394S6		5	91
96906	MS24398D12-8	5365-00-802-9319	5	99
96906	MS24402-8	4730-00-804-7944	5	7
96906	MS24402D4	4730-00-722-1207	5	16
96906	MS24404-4	4730-00-542-4994	4	26
96906	MS24404D8	4730-01-077-6473	4	18
96906	MS24585C229	5360-00-834-3477	10	8
96906	MS24586-678	5360-01-145-3268	4	44
DELETED				
96906	MS27212-2-16	5940-00-950-7784	3	26
			BULK	24
96906	MS28759-4-0960	4720-00-720-1993	4	12
96906	MS28759E0360	4720-00-727-0829	4	27
96906	MS28759H0960	4720-00-721-6072	4	19
96906	MS28760-4	4730-00-541-4252	4	13
			4	28
96906	MS28760-8	4730-00-541-4253	4	20
96906	MS28775-011	5330-00-582-2133	6	4
96906	MS28775-012	5330-00-584-0265	4	96
			6	11
			6	4A

NATIONAL STOCK NUMBER AND PART NUMBER INDEX

PART NUMBER INDEX

FSCM	PART NUMBER	STOCK NUMBER	FIG	ITEM
96906	MS28775-013	5330-00-684-3420	9	3
96906	MS28775-014	5330-00-584-1840	9	4
96906	MS28775-128	5330-00-702-5643	4	5
96906	MS28778-4	5330-00-805-2966	5	30
			9	7
96906	MS28778-6	5330-00-804-5695	5	100
96906	MS3417-14N	5935-00-622-2723	2	5
			2	9
96906	MS35190-238	5305-00-059-4553	8	3
96906	MS35191-289	5305-00-988-3784	4	22
96906	MS35191-291	5305-00-988-3785	8	5
96906	MS35191-308	5305-00-984-7350	4	57
96906	MS35333-38	5310-00-559-0070	3	94
96906	MS35338-41	5310-00-045-4007	3	80
96906	MS35338-43	5310-00-045-3296	3	39
96906	MS35426-13	5310-00-720-8549	6	8
96906	MS35426-30	5310-01-134-2732	4	60
96906	MS35649-202	5310-00-934-9758	3	38
96906	MS35650-3312	5310-00-054-4892	7	5
81205	MS39086-37	5315-00-181-6481	4	92
96906	MS39087-201AN		3	58
96906	MS51534A6-4	4730-00-706-8711	5	5
96906	MS51534A8-4	4730-00-676-3075	5	11
96906	MS51831-102	5340-00-451-8982	8	8
96906	MS51963-222	5305-01-083-1597	7	10
96906	MS51963-242	5305-01-051-8029	7	11
96906	MS51967-50	5310-00-253-2798	4	93
96906	MS77072-2	5940-00-156-7196	3	82
81349	M22759-16-16-9	6145-01-044-8799	BULK	4
81349	M22759-16-20-9	6145-01-042-4621	BULK	3
81349	M39019/03-249	5925-01-018-6843	3	69
81349	M5501/9-F10	5340-01-302-9269	9	2
81349	M63540/1-15	5307-01-296-9822	3	96
81349	M63540/1-38C	5307-01-203-2484	3	97
81349	M7928/5-5	5940-01-079-1936	BULK	9
81349	M83723/84R1412N	5935-00-407-2513	3	54
81349	M83723/84R1415N	5935-01-147-6967	3	53
DELETED				
81349	M83723/85R1412N	5935-01-159-2358	4	64
81349	M83723/86R1203N	5935-00-005-8857	2	11
81349	M83723/86R1412N	5935-01-044-9598	2	8
81349	M83723/86R1415N	5935-00-199-7619	2	4
81349	M83723/87R1412N	5935-01-147-6956	2	7
81349	M83723/87R1415N	5935-01-014-2936	2	3
81349	M83723/85R1415N		1	14
80205	NAS1189E4P24	5305-01-143-9191	10	9
80205	NAS1304-8DH	5306-00-616-2759	7	2
80205	NAS1387-2	5940-00-136-9188	BULK	13
80205	NAS1387-3	5940-00-168-3316	BULK	12
80205	NAS1388-1	5940-00-143-5147	BULK	11

NATIONAL STOCK NUMBER AND PART NUMBER INDEX

PART NUMBER INDEX

FSCM	PART NUMBER	STOCK NUMBER	FIG	ITEM
80205	NAS1388-2		BULK	10
80205	NAS1773-4	5310-01-138-5511	10	18
80205	NAS1786A06-6	5340-01-145-9346	3	16
80205	NAS1786A08-8	5310-01-108-7503	3	30
80205	NAS43DD0-18	5365-00-815-9049	3	76
80205	NAS43DD1-52	5365-00-817-4840	3	14
80205	NAS43DD1-56	5365-00-580-5312	3	15
80205	NAS43DD3-16	5365-00-684-2093	3	40
80205	NAS514P440-20P	5305-01-015-7160	3	8
80205	NAS514P440-8P	5305-00-052-6763	3	25
80205	NAS514P632-5P	5305-00-991-6542	3	17
80205	NAS514P832-12P	5305-00-261-3798	3	20
80205	NAS514P832-6P	5305-00-428-0734	3	3,31
80205	NAS514P832-10P	5305-00-991-6533	3	6
80205	NAS5141032-10P		3	2
80205	NAS600-11P	5305-00-813-2789	3	75
80205	NAS600-4P	5305-00-842-0240	3	72
80205	NAS600-5P	5305-00-841-9827	3	73
80205	NAS601-32P	5305-00-222-2990	3	12
80205	NAS601-4P	5305-00-841-9826	3	29
80205	NAS603-6P	5305-00-813-2796	3	56
80205	NAS603-9P	5305-00-813-2791	3	86
80205	NAS604-12P	5305-00-967-2024	10	11
80205	NAS607-4-4		3	33
			4	33
80205	NAS607-4-6	5315-00-687-5084	9	12
80205	NAS620-416	5310-00-655-7219	7	7
80205	NAS620-6	5310-00-622-9531	3	13
80205	NAS671-6	5310-00-631-1294	3	79
80205	NAS679C4M	5310-00-813-3232	10	6
91929	PMHH152GR4DC-99	5930-01-148-2987	3	65
91929	PMHH152GR4DG-63	5930-01-146-7382	3	63
91929	PMHH152GR4DG-64	5930-01-148-2989	3	62
91929	PMHH152WB4DG-SEL F/CROSS	5930-01-148-2988	3	64
54846	PRV2-10-K-6T-25	4810-01-141-8716	5	94
86768	PR6701-2-1/4S2	4820-01-144-3755	5	81
72962	RMLHTE2860-054W	5310-00-680-7105	4	58
81349	RV6SAYSD103A	5905-00-013-9582	3	67
81343	SAE-J524		BULK	30
51106	SLS92-28		3	32
81348	SN96WRAP3 0.032 1LB	3439-00-411-5097	BULK	18
16309	SP01-18		5	74
81205	STBS12EZ10BD6		3	55
81205	S1BS3863		BULK	17
15755	SID-27A-400		3	7
81205	S52-1-(.25)-9		BULK	19
15434	S962	4730-00-044-4715	3	11
84971	TA5000BH1402	5340-01-117-7701	10	3
59730	TC-354A		5	107
83259	TRTX12-4SS		5	70

NATIONAL STOCK NUMBER AND PART NUMBER INDEX

PART NUMBER INDEX

FSCM	PART NUMBER	STOCK NUMBER	FIG	ITEM
81205	UT-7101		BULK	39
81205	UT-7101-2F		BULK	38
81205	UT-7101-8		4	70
81205	UT-7101-8-L		4	56
81205	UT7101-4-RL		4	10
81205	UT7113-848		10	17
77272	VS25113-4		1	9
DELETED				
95760	WW4	5340-00-514-2777	6	2
27192	10250TC53	6210-01-162-2186	4	51
27192	10250T5	5975-01-142-1001	4	52
27192	10250T63	6210-01-142-1000	4	53
18876	11509701-002	5930-00-918-6887	4	50
71785	12-141		3	22
81205	1377DS-04B	5210-01-144-1883	5	85
71785	140J-1		3	23
77272	145GS278-1	4920-01-121-0604	1	1
77272	145GS278-10		4	98
77272	145GS278-11		4	30
			1	1
77272	145GS278-13		4	3
77272	145GS278-14		4	95
77272	145GS278-18		4	8
77272	145GS278-2	4920-01-142-2648	1	20
77272	145GS278-20		13	1
77272	145GS278-3		1	2
77272	145GS278-4		1	6
			2	10
77272	145GS278-5		1	3
			2	1
77272	145GS278-6		1	4
			2	2
77272	145GS278-7		1	5
			2	6
77272	145GS278-8		4	35
77272	145GS278-9		4	73
77272	145H1288-1	4820-01-122-6302	9	5
81205	182-14884-1		3	87
81205	182-14884-2		3	88
81205	182-14884-3		3	89
81205	182-14884-4		3	90
81205	182-14887-1	6110-01-142-2825	3	5
81205	182-14890-10		3	84
81205	182-14890-11		3	85
81205	182-14890-12		3	18
81205	182-14892-14		3	78
81205	182-14890-8		1	7
			3	1
81205	182-14890-9		3	83
81205	182-14894-1		3	95

NATIONAL STOCK NUMBER AND PART NUMBER INDEX

PART NUMBER INDEX

FSCM	PART NUMBER	STOCK NUMBER	FIG	ITEM
81205	182-14894-11		3	42
81205	182-14894-12		3	43
81205	182-14894-15		3	41
81205	182-14894-2		3	48
81205	182-14894-3		3	45
81205	182-14894-8		3	46
81205	182-14894-9		3	44
81205	182-14895-1		3	60
81205	182-14895-2		1	8
81205	182-14896-1		1	3
81205	182-14896-2		1	4
81205	182-14896-3		1	5
81205	182-14896-5		1	6
81205	182-14897-2		1	13
81205	182-14899-2		1	10
81205	182-14899-3		1	11
81205	182-14899-4		1	2
	182-14900-2	4920-01-121-0604	1	1
81205	182-14937-10		4	61
81205	182-14937-11		4	102
81205	182-14937-12		4	1
81205	182-14937-2		4	100
81205	182-14937-3		4	101
81205	182-14937-4		4	23
81205	182-14937-5		4	8
81205	182-14937-6		4	15
81205	182-14937-7		4	9
			4	24
81205	182-14937-8		4	16
81205	182-14937-9		4	54
81205	182-14939-1		4	95
81205	182-14939-2	4730-01-144-0879	4	97
81205	182-14940-2		5	104
			9	1
81205	182-14941-1		9	21
81205	182-14942-1	5340-01-142-0998	9	11
81205	182-14943-2		4	30
81205	182-14944-1		6	9
81205	182-14944-2		6	14
81205	182-14944-4		6	13
81205	182-14944-5		6	10
81205	182-14945-2		6	5
81205	182-14946-1	5305-01-144-0880	6	6
81205	182-14946-2	5305-01-141-8718	9	9
81205	182-14947-1	5340-01-145-3212	4	3
81205	182-14947-2		4	6

NATIONAL STOCK NUMBER AND PART NUMBER INDEX

PART NUMBER INDEX

FSCM	PART NUMBER	STOCK NUMBER	FIG	ITEM
81205	182-14947-3		4	4
81205	182-14948-1		4	32
81205	182-14948-2		4	34
81205	182-14949-1	3110-01-145-0840	4	83
81205	182-14949-2		4	84
81205	182-14950-1		4	49
			7	1
81205	182-14951-1		7	3
81205	182-14951-2		7	6
81205	182-14952-1		7	8
81205	182-14952-2	3010-01-144-3783	7	12
81205	182-14952-3		7	9
81205	182-14957-1		4	40

NATIONAL STOCK NUMBER AND PART NUMBER INDEX

PART NUMBER INDEX

FSCM	PART NUMBER	STOCK NUMBER	FIG	ITEM
81205	182-14961-1		4	99
			5	1
81205	182-14961-2		5	108
81205	182-14962-1		5	109
			8	1
81205	182-14962-2		8	10
81205	182-14962-3		8	9
81205	182-14962-4		8	2
81205	182-14962-5		5	79
81205	182-14962-6		8	7
81205	182-14962-7		8	4
81205	182-14963-1		4	77
81205	182-14963-2		4	80
81205	182-14963-3		4	86
81205	182-14964-1		5	76
81205	182-14965-1		10	5
81205	182-14965-2		10	10
81205	182-14966-1		4	103
			10	1
81205	182-14966-2		10	19
81205	182-14966-3		10	14
81205	182-15106-1		4	89
81205	182-15106-2		4	94
81205	182-15171-1	5305-01-141-8719	4	65
81205	182-15171-2		4	72
81205	182-15178-1	1650-01-141-7581	5	84
81205	182-15288-10		5	25
81205	182-15288-11		5	24
81205	182-15288-12		5	23
81205	182-15288-13		5	22
81205	182-15288-14		5	20
81205	182-15288-15		5	21
81205	182-15288-16		5	53
81205	182-15288-17		5	52
81205	182-15288-18		5	55
81205	182-15288-19		5	51
81205	182-15288-20		5	56
81205	182-15288-24		5	49
81205	182-15288-25		5	54
81205	182-15288-28		5	57
81205	182-15288-33		5	58
81205	182-15288-35		5	59
81205	182-15288-36		5	60
81205	182-15288-37		5	13
81205	182-15288-38		5	66
81205	182-15288-39		5	65
81205	182-15288-40		5	34
81205	182-15288-41		5	48
81205	182-15288-43		5	50
81205	182-15288-44		5	19
81205	182-15288-45		5	47

NATIONAL STOCK NUMBER AND PART NUMBER INDEX
PART NUMBER INDEX

FSCM	PART NUMBER	STOCK NUMBER	FIG	ITEM
81205	182-15288-46		5	41
81205	182-15288-47		5	39
81205	182-15288-48		5	36
81205	182-15288-49		5	10
81205	182-15288-50		5	35
81205	182-15288-51		5	17
81205	182-15288-52		5	9
81205	182-15288-53		5	14
81205	182-15288-54		5	8
81205	182-15288-56		5	4
81205	182-15288-57		5	67
81205	182-15288-58		5	68
81205	182-15288-59		5	18
81205	182-15288-60		5	31
81205	182-15288-61		5	32
81205	182-15288-62		5	33
81205	182-15288-63		5	37
81205	182-15288-64		5	15
81205	182-15288-65		5	3
81205	182-15288-66		5	2
81205	182-19549-1		3	19
81205	182-15595-1		9	19
81205	182-15595-2		9	18
81205	182-15596-1		9	17
81205	182-15597-1		9	8
81205	182-19555-1		3	47
91929	2PB901T2	5930-00-009-4577	3	71
21335	202KLL2	3110-00-156-3471	4	85
57163	25-5041J	5210-00-727-2357	4	74
81205	280-35001-115	5935-01-147-6970	3	74
96259	3C11-4T-3		5	26
18604	303	8040-00-181-7711	BULK	35
00624	309-4	4720-00-683-8830	BULK	34
81349	38TB6	5940-00-983-6084	3	21
98376	396KA2L32P33C1A		1	12
27005	4WE6D51/NZ4/5	4810-01-144-6309	5	75
07829	461		7	15
76854	5-16311-316BAM1	5930-01-144-0374	3	68
76854	5-21611-313	5930-01-159-5242	3	51
76854	5-22381-327BAM3	5930-01-144-9002	3	52
74545	5266C	5935-01-005-3579	2	12
76854	5-41541-312	5930-01-163-6218	3	61
84971	5002BH10-02	4730-01-142-0999	10	2
83259	600-3130-10	5330-01-070-8206	3	57
57163	657F		4	38
57163	657G		4	98
57163	657H	5210-00-442-4809	4	75
57163	657R		4	39
57163	6632/20		4	76
86768	689B3-1-4D2	4820-00-518-3742	5	95
99017	7/16SCX3/8	5340-01-142-0995	6	3
57163	711-28-29-30		4	37

NATIONAL STOCK NUMBER AND PART NUMBER INDEX

PART NUMBER INDEX

FSCM	PART NUMBER	STOCK NUMBER	FIG	ITEM
57163	711HS		4	36
59793	744-1001MDF60-2		11	8
59793	744-1001MDF60-3		11	6
59793	744-1001MDF60-4		11	4
59793	744-1001MDF60-5		11	2
59793	744-1001MDF60-6	5330-01-148-6219	11	7
59793	744-1001MDF60-7	5330-01-142-1005	11	10
59793	744-1001MDF60-8	5330-01-142-1006	11	3
59793	744-1001MDF60-9	5330-01-142-1007	11	5
11710	80D	6635-00-705-5469	4	2
27005	833365	5306-01-144-9003	5	73
86768	8422E-4D2P	4820-01-144-3784	5	89
19207	856468	4010-00-032-2938	BULK	36
07829	957		7	14
07829	968		7	13

By Order of the Secretary of the Army:

Official:

CARL E. VUONO
General, United States Army
Chief of Staff

R. L. DILWORTH
Brigadier General, United States Army
The Adjutant General

DISTRIBUTION:

To be distributed in accordance with DA Form 12-31, AVIM Maintenance requirements for CH-47D Helicopter, Cargo Transport.



THEN... JOT DOWN THE DOPE ABOUT IT ON THIS FORM, CAREFULLY TEAR IT OUT, FOLD IT AND DROP IT IN THE MAIL!

SOMETHING WRONG WITH THIS PUBLICATION?

FROM: (PRINT YOUR UNIT'S COMPLETE ADDRESS)
PFC JOHN DOE
COA, 3d ENGINEER BN
FT. LEONARD WOOD, MO 63108
 DATE SENT

PUBLICATION NUMBER
 TM 55-4920-428-30P

PUBLICATION DATE
 7 Aug 1987

PUBLICATION TITLE RPSTL Integrated Lower Controls Actuator (ILCA) Bench Test Set NSN4920-01-121-0604

BE EXACT... PIN-POINT WHERE IT IS

PAGE NO.	PARA-GRAPH	FIGURE NO	TABLE NO
6	2-1 a		
B1		4-3	
125	line 20		

IN THIS SPACE TELL WHAT IS WRONG AND WHAT SHOULD BE DONE ABOUT IT:

In line 6 of paragraph 2-1a the manual states the engine has 6 Cylinders. The engine on my set only has 4 Cylinders. Change the manual to show 4 Cylinders.

Callout 16 on figure 4-3 is pointing at a bolt. In key to figure 4-3, item 16 is called a shim - Please correct one or the other.

I ordered a gasket, item 19 on figure B-16 by NSN 2 910-00-762-3001. I got a gasket but it doesn't fit. Supply says I got what I ordered, so the NSN is wrong. Please give me a good NSN

PRINTED NAME, GRADE OR TITLE, AND TELEPHONE NUMBER

JOHN DOE, PFC (268) 317-7111

SIGN HERE

John DOE
JOHN DOE

TEAR ALONG PERFORATED LINE

FILL IN YOUR
UNIT'S ADDRESS

FOLD BACK

DEPARTMENT OF THE ARMY

OFFICIAL BUSINESS
PENALTY FOR PRIVATE USE \$300

POSTAGE AND FEES PAID
DEPARTMENT OF THE ARMY
DOD 314



COMMANDER
US ARMY AVIATION SYSTEMS COMMAND
ATTN: AMSAV-MPSD
4300 GOODFELLOW BOULEVARD
ST. LOUIS, MO 63120-1798

TEAR ALONG PERFORATED LINE

The Metric System and Equivalents

Linear Measure

1 centimeter = 10 millimeters = .39 inch
 1 decimeter = 10 centimeters = 3.94 inches
 1 meter = 10 decimeters = 39.37 inches
 1 dekameter = 10 meters = 32.8 feet
 1 hectometer = 10 dekameters = 328.08 feet
 1 kilometer = 10 hectometers = 3,280.8 feet

Weights

1 centigram = 10 milligrams = .15 grain
 1 decigram = 10 centigrams = 1.54 grains
 1 gram = 10 decigrams = .035 ounce
 1 dekagram = 10 grams = .35 ounce
 1 hectogram = 10 dekagrams = 3.52 ounces
 1 kilogram = 10 hectograms = 2.2 pounds
 1 quintal = 100 kilograms = 220.46 pounds
 1 metric ton = 10 quintals = 1.1 short tons

Liquid Measure

1 centiliter = 10 milliliters = .34 fl. ounce
 1 deciliter = 10 centiliters = 3.38 fl. ounces
 1 liter = 10 deciliters = 33.81 fl. ounces
 1 dekaliter = 10 liters = 2.64 gallons
 1 hectoliter = 10 dekaliters = 26.42 gallons
 1 kiloliter = 10 hectoliters = 264.18 gallons

Square Measure

1 sq. centimeter = 100 sq. millimeters = .155 sq. inch
 1 sq. decimeter = 100 sq. centimeters = 15.5 sq. inches
 1 sq. meter (centare) = 100 sq. decimeters = 10.76 sq. feet
 1 sq. dekameter (are) = 100 sq. meters = 1,076.4 sq. feet
 1 sq. hectometer (hectare) = 100 sq. dekameters = 2.47 acres
 1 sq. kilometer = 100 sq. hectometers = .386 sq. mile

Cubic Measure

1 cu. centimeter = 1000 cu. millimeters = .06 cu. inch
 1 cu. decimeter = 1000 cu. centimeters = 61.02 cu. inches
 1 cu. meter = 1000 cu. decimeters = 35.31 cu. feet

Approximate Conversion Factors

To change	To	Multiply by	To change	To	Multiply by
inches	centimeters	2.540	ounce-inches	newton-meters	.007062
feet	meters	.305	centimeters	inches	.394
yards	meters	.914	meters	feet	3.280
miles	kilometers	1.609	meters	yards	1.094
square inches	square centimeters	6.451	kilometers	miles	.621
square feet	square meters	.093	square centimeters	square inches	.155
square yards	square meters	.836	square meters	square feet	10.764
square miles	square kilometers	2.590	square meters	square yards	1.196
acres	square hectometers	.405	square kilometers	square miles	.386
cubic feet	cubic meters	.028	square hectometers	acres	2.471
cubic yards	cubic meters	.765	cubic meters	cubic feet	35.315
fluid ounces	milliliters	29.573	cubic meters	cubic yards	1.308
pints	liters	.473	milliliters	fluid ounces	.034
quarts	liters	.946	liters	pints	2.113
gallons	liters	3.785	liters	quarts	1.057
ounces	grams	28.349	liters	gallons	.264
pounds	kilograms	.454	grams	ounces	.035
short tons	metric tons	.907	kilograms	pounds	2.205
pound-feet	newton-meters	1.356	metric tons	short tons	1.102
pound-inches	newton-meters	.11296			

Temperature (Exact)

°F	Fahrenheit temperature	5/9 (after subtracting 32)	Celsius temperature	°C
----	------------------------	----------------------------	---------------------	----

